

# SPNHC NEWSLETTER

www.spnhc.org

**President**

Richard Rabeler

**President-Elect**

Jean-Marc Gagnon

**Past President**

Tim White

**Treasurer**

Barbara Brown

**Secretary**

Judith Price

**Managing Editor**

Susan Butts

**Editor**

Andrew C. Bentley



25th Anniversary Year

SPNHC

ADVANCING COLLECTIONS CARE

**Society for the Preservation  
of Natural History Collections**

March 2010  
Volume 24, Number 1

## The EDIT Platform for Cybertaxonomy

**Agnes Kirchhoff**

*EDIT WP 5 - Scientific Coordinator, Freie Universität Berlin  
Botanic Garden and Botanical Museum Berlin-Dahlem, Königin-Luise-Str. 6-8  
D-14195 Berlin, Germany; email a.kirchhoff@bgbm.org; wp5.e-taxonomy.eu/*

EDIT, the European Distributed Institute of Taxonomy, is a Network of Excellence funded over a period of five years by the European Union's 6th Framework Programme for Research. Twenty six European and three non-European institutions active in the field of taxonomic research are involved in the network, whose aim is to bring together Europe's many and scattered taxonomic specialists. The work of EDIT is structured through seven work packages: Project and research coordination; The expert basis; The infrastructure basis; The internet platform for cybertaxonomy; Web-based taxonomy; All species inventories and monitoring; Training and capacity building. The development of the Internet Platform for Cybertaxonomy is coordinated by the Botanic Garden and Botanical Museum Berlin-Dahlem under the direction of Professor Walter Berendsohn. Thirteen European institutions are involved in its development. Version 2 of the Platform for Cybertaxonomy was presented at the EDIT General Meeting in Carvoeiro, Portugal on 16 December 2009. This document provides a brief overview of the Platform's most important features.

The Platform has a modular design and replicates the workflow of revisionary taxonomy. The software modules were developed to aid and accelerate the workflow, and great impor-

tance was attached to software tools which are highly flexible and have as few restrictions as possible to facilitate an easy transition from the conventional way of working to the platform. The Platform can be used both by the individual and by teams working together either within one institution or across institutions. (see also: <http://wp5.e-taxonomy.eu/>)

### *Cybergate*

The Cybergate provides an overview of the Platform's software products, showing all components and their possible interactions. The user is taken to the individual applications by clicking on the relevant section of the Cybergate. (see also: <http://dev.e-taxonomy.eu/platform/>)

### *CDM (Common Data Model) Community Store*

All data is stored in a repository known as the CDM Community Store. The various Platform components are linked by interfaces to this central facility to enable storage.

### *CDM Library*

The CDM Library forms the heart of the Platform software. It contains a set of software

*Continued on page 2*

## INSIDE...

|                                    |    |
|------------------------------------|----|
| EDIT cybertaxonomy ..              | 1  |
| Presidential Report .....          | 3  |
| Committee Reports .....            | 4  |
| Sessional Committee reports .....  | 6  |
| SPNHC Representative Reports ..... | 8  |
| Membership Profile .....           | 11 |
| SciColl meeting report             | 13 |
| SPNHC 2010 .....                   | 16 |
| Announcements .....                | 22 |
| Pubs of interest .....             | 22 |
| Calendar .....                     | 24 |

..... and much more!

ISSN 1071-2887

Continued from page 1:  
.....EDIT cybertaxonomy...

functions which draw on the CDM and enable the individual Platform components to interact. The CDM therefore contains a description of all data which can be used and edited in the Platform, such as taxon names and concepts, literature references, specimens, distributions and structured descriptive data.

The CDM complies with international data standards, such as conventional geographic and bibliographic data formats and established technical formats (e.g. XML, ODF). The standards specified by the Taxonomic Database Working Group (TDWG) are applied to taxonomic data.

The library enables programmers to access the data stored in the CDM using complex, tried and tested functions. They are thus able to restructure taxonomies, view scientific names and corresponding references, call up lists of synonyms etc. The software, which is available under an open source licence, is open for implementation with other specialised software. A new CDM library-based taxonomic software is being developed under the CATE (Creating a Taxonomic e-Science) project, for example. The programs provided by the EDIT project and introduced briefly below are therefore not the only solutions available.

### Publication software

- CDM DataPortal software

The data portal software can be used to publish the data from the CDM Community Store live on the Internet. Access can be restricted to a particular group such as a working group, or be open to anyone via the internet. Three thematic portals have been created to date under the

EDIT project: sample portals for Palms, Cichorieae and Diptera. These portals provide the following information for each taxon: a taxonomic tree, synonyms, links to digitalised protologues, descriptions, illustrations, information on distribution and distribution maps.

- Print publication support

In addition to the data portal software for web-based publications, software is also being developed which transforms the data into a print version which can be exported directly from the CDM Library. Templates can be used to adapt the layout of the print version to particular publications (periodicals, magazines), or the default standard used to send the information to a word processing application for further editing.

### Geographic software tools

The distribution data is visualised using MapService, the EDIT GIS software, or with MapViewer, the portal's interface software. The maps can be given a personal touch with a wide

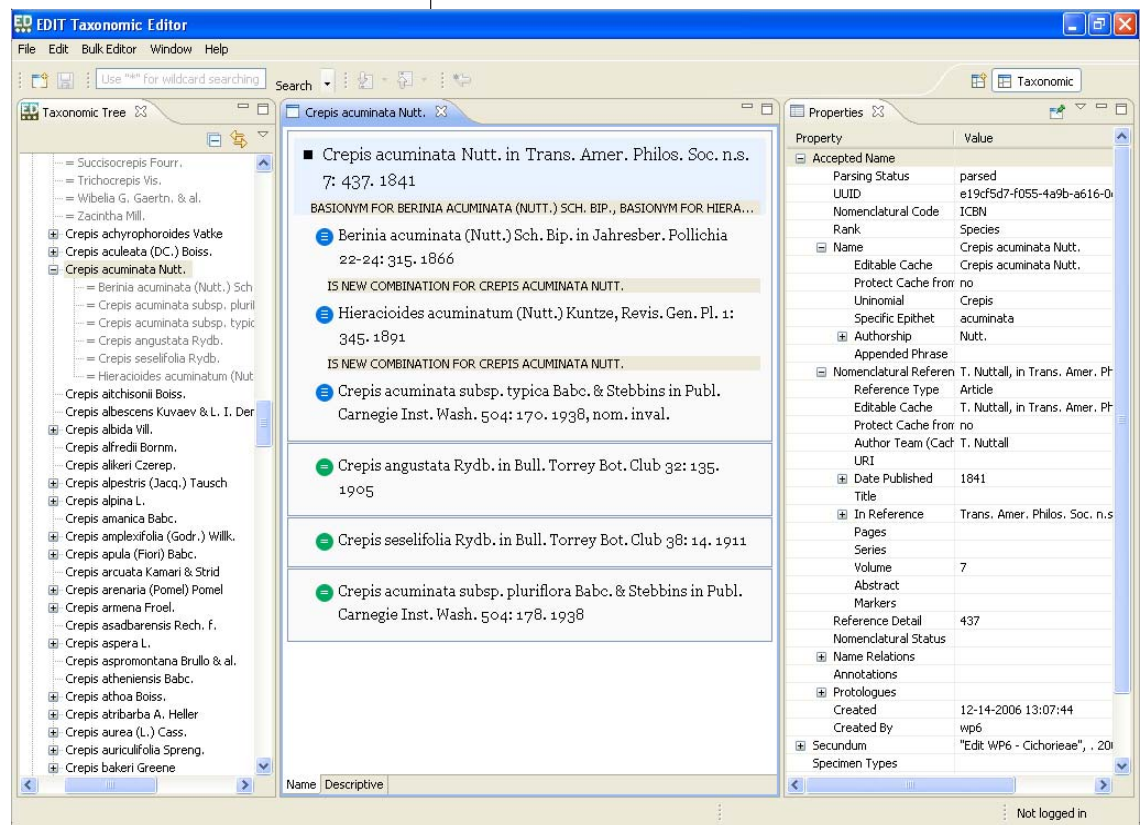


Fig 1.: The 3-paned view of the Taxonomic Editor: from left to right, taxonomic tree; free text field; and the properties field.

***This space could be yours.....***

SPNHC Newsletter is looking for articles, news items, etc., for the next edition. Articles of 1000 words or less considered. Contact Andy Bentley (ABentley@ku.edu) for information. The deadline for submissions for the next issue is August 1, 2010.

range of functions. These include uploading background maps, a zoom function and customised legends. A variety of the-matic GIS layers can be downloaded.

Continued on page 19

# Presidential Report

*Rich Rabeler*

**Senior Collections Manager and  
Assistant Research Scientist**  
University of Michigan Herbarium,  
3600 Varsity Drive, Ann Arbor, MI  
48108-2228 USA



In this time of continued budget concerns for many of us, I do have some good news to report. If you recall, SPNHC received an anonymous, restricted donation to partially support the new Travel Grant program! The donation was made in honor of the eight original founding members who had the foresight and vision to create SPNHC and is now known as the "Founder's Fund". Remember that the donor made this donation as a challenge? The donor planned to *match every dollar* that is given to the Founders Fund up to \$1500. Well, thanks to the generosity of 20 of our members, the donor has to do just that. The match was exceeded; \$1650 was contributed, giving us a total of \$3150 in our new fund. It's nice to start our 25<sup>th</sup> year with some good news! My thanks go to all of the contributors for helping us inaugurate this fund in a very successful way.

Plans are actively proceeding for our 2010 meeting on 31 May – 5 June 2010 in Ottawa, Ontario, Canada. Our host will be the Canadian Museum of Nature. The theme of the meeting is "Biodiversity: 2010 and Beyond - Science and Collections." As many of you know, this is the first time that SPNHC will be meeting with a discipline-centered society; we will be joined by members of the Canadian Botanical Association (CBA/ABC). Watch the conference website (<http://www.spnhc-cba2010.org/>) for deadlines and the latest information about what our hosts have planned! I hope to see many of you at the meeting.

It is time for the annual election, this time for President-elect, Secretary, and two Members-at-Large, and, following last year's success, we are again using an on-line system. Kelly Sendall, Election Chair, will be monitoring the system. Be sure to participate – help guide the Society through your votes.

By the time that you read this, I will have returned from a brief trip to Brussels, Belgium. I represented SPNHC at the Scientific Collections International meeting entitled "International Coordination of an Interdisciplinary Global Research Infrastructure" that was held at the Royal Belgian Institute of Natural Sciences on 8-9 February 2010. I wish to thank Alan Prather, one of the principals on the CollectionsWeb project, for suggesting that SPNHC be represented and David Schindel, Consortium for the Barcode of Life (CBOL), for obtaining funding for the trip. I plan to provide a report for a future issue of the Newsletter.



*25th Anniversary Year*  
**SPNHC**  
ADVANCING COLLECTIONS CARE



**SPNHC**

ADVANCING COLLECTIONS CARE

The **Society for the Preservation of Natural History Collections** was formed in 1985 and is recognized as a non-profit organization [501(c)(3)] in the United States. SPNHC members receive *Collection Forum*, a biannual journal of reviewed technical information, and two issues of the *SPNHC Newsletter* each year. The Society for the Preservation of Natural History Collections (SPNHC) is a multidisciplinary organization composed of individuals who are interested in development and preservation of natural history collections. Natural history collections include specimens and supporting documentation, such as audio-visual materials, labels, library materials, field data, and similar archives. The Society actively encourages the participation of individuals involved with all aspects of natural history collections.

The **SPNHC Newsletter** (ISSN 1071-2887) is published twice a year, March and September, by the Society for the Preservation of Natural History Collections, c/o Division of Ichthyology, Biodiversity Institute, University of Kansas, Dyche Hall, 1345 Jayhawk Boulevard, Lawrence, KS 66045-7593, USA.

**Changes of address** should be directed to SPNHC Treasurer, Planetarium Station, PO Box 526, New York, NY 10024-0526, USA.

**Submissions** are welcome. Please forward announcements, articles and notes to the Newsletter Editors by mail or email.

**Deadline** for the next Newsletter is August 1, 2010.

---



---

## COMMITTEE REPORTS

---

### Archives Committee

#### BACKGROUND

The Smithsonian Institution Archives (SIA) houses the archives of SPNHC. From 1993 to 2007, SPNHC deposited 16 groups of material totaling 23.5 cubic feet and spanning the years from 1981 through 2007. Examples of this material include *Collection Forum*, SPNHC newsletters, documentation of annual meetings, financial files, election ballots, Member-at-large files, various committee files, videos, CDs, and photographs.

#### PROCEDURE

The committee receives, lists, and transfers material to the Smithsonian Institution Archives when sufficient quantities accumulate. All material that is deposited within a fiscal year (October 1 through September 30) is assigned the same accession number and housed in the same storage box/unit. Some SPNHC archives need to be re-housed in archival materials prior to transfer to SIA. All material that has been received since the last deposit is currently being held by the committee.

#### CURRENT WORK

The Department of Anthropology (Smithsonian Institution) recently transferred Carolyn Rose's SPNHC files to the committee. This material totals 9.3 linear feet, including a lot of files relating to the two SPNHC storage books. The committee thanks Catharine Hawks for her assistance with this acquisition. Also, material for deposit in archives has been received from Lori Benson, Catharine Hawks and Rich Rabeler. This material is currently being prepared for deposit in SIA.

Respectfully submitted,  
Linda Hollenberg, Chair

---

### Conference Committee

The year 2009-10 started with a very ambitious agenda for SPNHC conferences. Following an excellent annual conference in Leiden, which brought our members to the second non-North American venue, we had hoped to complete the SPNHC Conference Planning Document, a work in progress since the Minnesota 2007 conference. Unfortunately, the Chair of the Conference Committee being also the lead organizer of the 2010 annual meeting in Ottawa, little time could be allocated to completing the document. The good news is that with the freshly acquired experience from the 2010 conference, several subjects will be updated or added to the guidelines.

In the meantime, the 2010 annual meeting in Ottawa is fast approaching (May 31-June 5), with members of the Canadian Botanical Association joining us on the University of Ottawa Campus. The website and registration went live in December 2009 ([www.spnhc-cba2010.org](http://www.spnhc-cba2010.org)), with a program that promises to keep the 400-500 conference participants hopping. Also, the Victoria Memorial Museum Building will have just completed a 6-year renovation project, with wonderful new galleries and public spaces. Our mixer will include behind the scenes tours of the technicalities.

As indicated in the previous newsletter, several other venues have now been identified for the following annual conferences: the 2011 SPNHC Annual Meeting to be hosted by the California Academy of Sciences in San Francisco; the 2013 meeting at Yale University/Peabody Museum, New Haven, CT; and strong prospects for the 2012 and 2014 meetings.

Respectfully submitted,  
Jean-Marc Gagnon, Chair

---

### Documentation Committee

The Documentation Committee is gearing up for 2010! At the fall 2009 group sessional meetings at Yale, Marcy and Liz volunteered to host a summer 2010 internship at the SNOMNH for the Best Practices committee. As the goals of this sessional committee reflect many of the goals of the Documentation Committee, we feel that a continued partnership with this sessional committee will benefit all. The summer internship will focus on gathering information on best practices topics from other respected online sources (for example, [MuseumPests.net](http://MuseumPests.net)). Why re-create information if it is already available? The ultimate goal (of both Best Practices and Documentation committees) is to host links and summaries of current information available on a variety of Best Practices topics via the SPNHC website. The summer internship will begin with one or two topics (to be decided later), and hopefully will expand from there.

If you are interested in applying for the internship, please send a CV, a letter of intent, and a letter of recommendation to Liz at: [etereba@ou.edu](mailto:etereba@ou.edu). Likewise, if you have questions, please e-mail Liz. The application deadline for this internship is **MONDAY, MARCH 15, 2010**, so the selected intern may have time to make preparations for housing for the summer.

In addition, the Committee looks forward to posting an example of a Registration Checklist on the SPNHC website soon. This checklist may be used as an example (to be modified, as needed for each institution's needs) for those who need a little help in forming sound registration/acquisition procedures.

Citations Subcommittee Report  
Subcommittee Chair:  
Larissa Busch ([lrbusch@ou.edu](mailto:lrbusch@ou.edu))

The Citations Subcommittee has continued to grow since the last newsletter with the addition of a new member. We would like to welcome Rebecca Peters, the Curatorial Assistant in Botany at the California Museum of Sciences, to the committee. The Citations Committee is also currently seeking additional members. If you are interested in joining, please contact the Co-chairs.

In addition to the bi-annual citations listed in the SPNHC Newsletter, we are continuing to work on the database of past citations. Once complete, we can post this database online for an added resource to all members of SPNHC!

Respectfully submitted,  
Marcia Revelez and Liz Leith, Co-chairs

---

## Election Committee

The Election for 2010 is under way and all ballots are to be returned to the ballot counters by **April 9, 2010**. We are voting for a President-Elect, a Secretary, and 2 Members-at-Large. You should have received an email message from Elections Online prompting you to vote electronically. You should also have received a paper ballot by mail. Either method is accepted (not both!) but I encourage you to use the e-vote method. The majority of ballot returns last year were electronic with only a handful of paper ballots returned. If the returns this year show the same trend, I will be suggesting to Council that we adopt the electronic method exclusively within a couple years.

Each year brings more members to our Society. We are growing in numbers internationally which increases our reach around the world. As well, the demographics of our membership are changing. We appear to be encouraging more younger members. This is all good. The future of SPNHC is bright. Your vote is very important and each member has a responsibility to help ensure a strong and effective governing council. If you haven't voted yet please do so soon! If you choose to vote on the paper ballot, don't forget to include your return address on the envelope.

Respectfully submitted,  
Kelly Sendall, Chair

---

## Publications Committee

Susan Butts of the Yale Peabody Museum has assumed the role of Managing Editor for SPNHC publications, including the journal Collections Forum.

To celebrate the Society's 25th Anniversary, we are inviting submission of manuscripts for a special Volume 25 of Collection Forum, the internationally respected, peer reviewed journal of SPNHC. Please consider submitting a manuscript for our traditional bi-annual CF volume (see the call for manuscripts in this newsletter).

See [http://www.spnhc.org/?q=publications/collection\\_forum.html](http://www.spnhc.org/?q=publications/collection_forum.html).

*Continued on page 6*

## Membership

Membership applications for Individuals (US\$35), Student, certified (US\$20), Subscription or Library (US\$45), Corporate/Commercial (US\$300) or Institutional (US\$65) may be submitted to:

*SPNHC Treasurer  
Planetarium Station  
P.O. Box 526  
New York, NY 10024-0526  
USA*

Be sure to include the following information:

*Name, Discipline Specialty, Institution  
Address (Street, City, State/Province, Country, Zip/  
Postal Code)  
Voice, Fax, E-mail address*

Payment may be made by cheque, money order, Visa or Mastercard.

Membership application/renewal form by portable document (Adobe Acrobat Reader required) and by Word file available at: <http://www.spnhc.org/files/renewal-2008.pdf>.

## Life Membership

The SPNHC Life Membership is a special membership category for those interested in the long-term financial stability of our organization. Life membership monies are invested towards the future goals of the Society. SPNHC life memberships are available for US\$875. The fee is 25 times the Individual Membership rate, currently US\$35. Life Memberships may be paid in one of three ways:

- (1) one-time payment of US\$875;
- (2) two-year installments of US\$475/1<sup>st</sup> year and US\$400/2<sup>nd</sup> year;
- (3) three-year installments of US\$420/1<sup>st</sup> year, US\$280/2<sup>nd</sup> year and US\$175/3<sup>rd</sup> year.

Please contact the Treasurer should you require further information about life memberships.

*Treasurer*

*Continued from page 5:  
.....Committee Reports*

Please look forward to the next book publication (in 2010) *Health and Safety for Museum Professionals*, edited by Catharine Hawks, Michael McCann, Kathryn Makos, Lisa Goldberg, David Hinkamp, Dennis Ertel, and Patricia Silence.

This comprehensive volume is treated in three parts:

Part 1: Principles of Safety and Health - fire protection, occupational hazards, and waste management.

Part 2: Specific Hazards (particulates, chemical hazards, and toxins, physical, mechanical, and electrical hazards, and radiation).

Part 3: Museum Work (facilities management, emergency salvage, collections management, fieldwork, conservation and restoration, and exhibit protection and maintenance).

The nineteen chapters were written by top specialists in their field. It will certainly prove to be an invaluable reference book for museum professionals!

Respectfully submitted,  
Susan Butts, Chair

---

## Web Committee

Based on discussions at the past year's council meetings and feedback from members we decided to meet and reevaluate the Society's requirements for its website. The meeting took place at Yale University in the Fall of 2009, and included several web committee members along with representatives of council and other committee members. All agreed that the website is our single most important conduit to members and other users of our resources. There was also a strong desire to appear more professional and include functionality that is not sustainable under the current volunteer model. This discussion led to a transformational decision to consider outsourcing our web development, design, and hosting. To facilitate this, Chris Norris, Lisa Palmer, and Lisa Elkin led the development of an RFP describing the perceived requirements for a new web presence in order to solicit bids for design and management of the website. We hope to share some exciting news on this subject with members at the upcoming SPNHC meeting in Ottawa.

New on the web page are the updated 25<sup>th</sup> Anniversary logo (courtesy of Janet Waddington), updated author guidelines for Collection Forum (courtesy of Susan Butts) and a list of Museum Studies Programs (Courtesy of Tim White). We look forward to receiving an updated version of the latter document from the Education Committee for posting in the near future. PERMIT-L, newly revived by Sally Shelton, is linked from within the 'Resources' menu and we have updated the Committees section. Excepting our most recent publications, all are available on-line. The 'News' in Resources is the home of useful new items, including the Threatened Collections Toolkit (cour-

tesy of Tiffany Adrain), various SPNHC AGM materials, and other documents of interest and relevance to our members. When new material is placed into that section it is listed in, and linked to, the 'Latest News' block. We are also in the process of merging data collection for the web calendar with that of the Newsletter calendar so the online calendar is more complete. Finally, we are trying to keep up-to-date with job postings, however, in the interest of speed these do not always appear with the ideal formatting but are eventually brought into line!

As always, please send worthy news items or job advertisements to Ann Molineux at [annm@austin.utexas.edu](mailto:annm@austin.utexas.edu). Also, if you are interested in helping to produce, correct, or identify content for the website we would love to hear from you.

Respectfully submitted,  
James Macklin and Ann Molineux, Co-chairs

---

## SESSIONAL COMMITTEE REPORTS

---

### Best Practices

In September, a group of Sessional Committee members and Council representatives of the Society for the Preservation of Natural History Collections (SPNHC) met at Yale University to discuss the role of the Society as it relates to best practices.

Best practices have been variously defined as techniques or methodologies that, through experience and research, have proven to reliably lead to a desired result; procedures that are generally agreed upon but not legislated; or, commendable actions and philosophies that successfully solve problems, can be replicated, and demonstrate an awareness of professional standards.

Professional societies play a vital role in codifying and disseminating best practices. They can also provide and enable infrastructure for ensuring that these best practices do not remain static but continue to develop and evolve in response to innovations within the field. By initiating and hosting web-based discussion forums, organizing workshop meetings and special interest groups, initiating new Sessional committees, and participating in wider community initiatives, SPNHC has the potential to take the lead in promoting best practices across natural history collections care. The September meeting was aimed at defining this role and identifying future actions.

What came out of this brainstorming meeting was an acknowledgement of the desire to achieve best practices and an understanding that best practice, as it relates to museum object care, starts with the initial decision about who should be caring for the material. This is an area where SPNHC has already begun to pull together a set of best practices relating

to collections stewardship, building on the work already done by Tiffany Adrain and Paula Work through the Threatened Collections Toolkit, produced by the Society in 2007.

During the course of the meeting, the Sessional Committee worked to further refine the Threatened Collections Toolkit as an example of Collections Stewardship, which is published elsewhere in this issue as a community white paper on best practices and on the SPNHC web site.

Over the next five years SPNHC will be undertaking a series of best practices exercises in specific areas of collections care. In each case, there will be an initial discussion meeting, possibly as part of the Society's annual meeting which will result in a white paper on best practices in this area. This paper will be posted online in a Wiki-based forum for discussion, comment, and amendment by the SPNHC membership and the wider collections community. Following this consultation period, the best practices will be posted on the SPNHC website. The Wiki will remain online and accessible for comment and the best practices will be reviewed and updated on a regular [annual] basis based on the comments received. The white paper on collections stewardship will be posted on the SPNHC website by the end of the year and the Wiki site will open for comments shortly thereafter.

The next area of activity will relate to best practices for cryo-collections. A special session on cryo-collections at the 2010 SPNHC meeting in Ottawa will act as the kick-off session for this exercise. The Best Practices Committee will look to partner with ISBER for this important initiative with invited and submitted papers. Look for these announcements.

In addition to its new focus on Best Practices, SPNHC will continue with its successful program of producing and publishing books relating to collections procedures and practices, the latest of which is on Museum Safety and is due for publication in 2010. The Society will also continue its participation in initiatives aimed at developing best practices in areas of wider interest to the heritage preservation community, such as the Integrated Pest Management Working Group ([www.museumpests.org](http://www.museumpests.org)) and the Taxonomic Database Working Group's work on standards for databasing biological collections information. Also, this summer the Sam Noble Oklahoma Museum of Natural History will host a SPNHC internship focused on Best Practices in Natural History Collections Management and Care. This internship will produce a resource web page for best practices. The focus of the internship will be the gathering of information via other professional websites and publications to create a centralized location for currently available information about various best practice topics. The product of this internship will aid the Society as it plans future topical sessions on best practices.

Respectfully submitted,  
James Macklin, Chair

## Federal Collections

The Sessional Committee on Federal Collections was established in 2009 with the specific goal of responding to the report of the US Interagency Working Group on Scientific Collections (IWGSC)<sup>1</sup>. This report, entitled "*Scientific Collections: Mission Critical Infrastructure for Federal Science Agencies*" was a review of the scope of scientific collections under the stewardship of the U.S. Government and its agencies, the uses to which those collections are put, and the challenges that the Federal Government faces in managing the collections as a resource for national and global scientific endeavor. Federal scientific collections include not just the 126 million specimens held by the Smithsonian's National Museum of Natural History, but also tens of millions of objects in the care of such diverse stewards as the U.S. Geological Survey, the Department of Agriculture, the National Park Service, the National Institutes of Health, and the Department of Transportation.

The report is an important document both for the U.S. natural science collections community and for the global natural history collections community that draws on specimens and data from the U.S. Federal Collections. It highlights the importance of these collections and establishes crucial first steps in improving their care and management. However, it is also plain from the report that the long-term infrastructure of federal scientific collections has reached a state of crisis that mirrors the wider national crisis in collections care reported by the Heritage Health Index in 2005<sup>2</sup>. This impression has been reinforced by a recent report<sup>3</sup> by the Inspector General's Office of the U.S. Department of the Interior, which highlighted a range of issues in the management of the Department's scientific collections, including a backlog of 78 million uncataloged specimens.

The Sessional Committee met in September 2009 to discuss the IWGSC report and its findings and to identify areas and issues where SPNHC could contribute expertise. Three specific areas were identified.

- Involving Federal Agencies in the Society's ongoing development of best practices for collections care, ensuring not only that they have access to the most up-to-date policies and procedures, but also that they are active participants in the formulation of community standards for collections care and operations.
- Assisting in the development of a new generation of federal collections staff through the provision of resources for training and professional development, while tapping the collective expertise of existing federal employees for the benefit of the wider collections community.
- Strengthening the work of IWGSC, or its successor, by building on the existing links between federal collections and the global collections community through the addition of a cross member with SPNHC.

*Continued on page 8*

Continued from page 7:  
.....Committee Reports

This proposal, together with detailed responses to each of the seven recommendations made by IWGSC in the report, formed the basis of a letter from the SPNHC President that was sent to Dr. John Holdren, Director of the U.S. Office of Science and Technology Policy, in October of 2009.

<sup>1</sup> [http://www.ostp.gov/galleries/NSTC%20Reports/Revision\\_1-22\\_09\\_CL.pdf](http://www.ostp.gov/galleries/NSTC%20Reports/Revision_1-22_09_CL.pdf)

<sup>2</sup> Heritage Health Index (2005). *A Public Trust at Risk: the Heritage Health Index Report on the State of America's Collections*. Washington, DC, Heritage Preservation

<sup>3</sup> <http://www.doioig.gov/upload/2010-I-0005.pdf>

Respectfully submitted,  
Chris Norris, Chair

---

## Long Range Planning

During the Leiden Meeting, members of the Long-Range Planning Sessional Committee met and determined that for 2009-10, it would concentrate on developing a vision for the Society, particularly taking into account the Society's role at the international level. The first step consisted of defining the strengths of our Society. The formulation of a draft vision statement of where we want to see SPNHC in 5-10 years was initiated in early fall 2009. This document was to be circulated later in the fall, but unfortunately other commitments have significantly slowed down progress.

This Sessional Committee will reconvene at the 2010 Annual Meeting in Ottawa.

Respectfully submitted,  
Jean-Marc Gagnon, Chair

---

## Mentorship

The Sessional Committee had a productive meeting in New Haven in September 2009. Efforts were focused on firming-up arrangements for the new Travel Grant Program that was approved by SPNHC Council at the Leiden meeting in July. The Sessional Committee refined the criteria for awarding grants and drafted a resource pack for host committees of annual meetings, including an application form, guidance notes, and templates for grant announcements, offer letters, and rejection letters. This resource pack was sent to the local committee for the 2010 Ottawa meeting, which will be the first meeting to feature the new program.

The Travel Grant Program is the first step in a wider program of mentorship for emerging professionals that is being developed by the Society. In 2010, the Sessional Committee will be concentrating its activities on some of the mechanisms

that need to be put in place to support this program, including the potential for contracting-out administrative support for the program to a third party provider, and the development of regional "nodes" for SPNHC that will act as local support networks for mentorship participants in countries with emerging economies.

Respectfully submitted,  
Chris Norris, Chair

---

## 25th Anniversary Celebration

Happy Birthday SPNHC!!

In 2010 SPNHC is celebrating 25 years of collections care. You will have noticed on the banner of this Newsletter that the new SPNHC logo has been modified to reflect the fact that this is our 25<sup>th</sup> anniversary year. The new logo now appears as the banner on the SPNHC website, the 2010 SPNHC-CBA Conference website and on Collection Forum volume 23.

Plans are underway to celebrate our 25<sup>th</sup> anniversary at the Annual Meeting in Ottawa. There will be a display in the trade show area of SPNHC products and memorabilia. Come and see what we used to look like and what we have achieved. The original founders of SPNHC will be honored at the banquet on June 3<sup>rd</sup>. Watch for other events.

Other SPNHC committees have been busy with anniversary initiatives, including the rollout of the SPNHC travel bursary for students to attend the annual meeting. Instead of buying an anniversary souvenir for the meeting, SPNHC will put the money saved toward the Travel Grant Program.

Respectfully submitted,  
Janet Waddington, Chair

---

## SPNHC REPRESENTATIVE REPORTS

---

### Geological Society of America (GSA)

During the last few months we have been exploring ways to foster informal ties with the Geological Society of America (GSA) which represents the broader geology community, the source of many vital collections. With many thanks to my co-chairs, especially Tim White, SPNHC will be convening a session this year at the annual meeting of GSA in Denver, 31 October - 3 November 2010. This will be the first time that SPNHC has been so visible at GSA, and we are especially pleased that other groups have chosen to co-sponsor this session, illustrating the broad relevance of the topic. We an-



ticipate that speakers will be drawn from the geosciences and beyond, including members of SPNHC. Current details of the session:

Joint Session Sponsors: Society for the Preservation of Natural History Collections, the Paleontological Society, the Mineralogical Society of America, and GSA Geoinformatics.

Title: Geological and Paleobiological Collections: Best Practices for Preservation, Access and Use in a Changing World

Description: Efficient access to well-archived geological specimens and effective ways to retrieve their related data are critical elements for research and education in the geosciences. We examine and share innovative methods to achieve these goals.

Rationale: This session provides an opportunity for geoscientists to examine ways to access geological and paleobiological specimens and effective methods to retrieve their related data, underscoring the inherent value of such resources for innovative research and education. As geoscience departments of many colleges and universities are reevaluating their priorities, the value and utility of the fundamental building blocks of past studies are coming under question. In addition, many museums have large backlogs of uncataloged and unprocessed materials that also present challenges for potential research and teaching purposes.

In order to access these collections we need to investigate methods for assessing risk, value and priority for curation, improved collections care, and the management of specimens and related information. The availability of new methodologies, database applications and internet resources has greatly increased the ability to efficiently manage geological and paleobiological collections for research, education and outreach. Other scientific disciplines, such as biological informatics that has led to many innovations for collections access and use, will be explored.

There is a wealth of research and educational opportunities available for existing geological and paleobiological collections. The use of emerging technologies, widespread access to the Internet and construction of online "virtual collections" and data portals, using such data retrieval protocols as DiGIR, are making collections related information accessible to geoscientists and other scientists looking to test hypothesis regarding earth processes and the history of life. We welcome submissions that describe innovative research made possible through use of these collections and associated information.

Conveners/co-chairs: Ann Molineux, UT Austin (SPNHC/PS), Tim White, Yale University (SPNHC/PS), and Chris Holl, (Princeton/MSA)

Respectfully submitted,  
Ann Molineux, Representative



### Museum labels for wet collections

A material long used in the harsh world of chemical drum labeling has properties that are beneficial to the way collections are tagged and identified. Alpha Systems has brought this exciting material to the museum environment. Now collection tags can be printed on demand and submerged in ethanol, methanol, formaldehyde, and other chemicals for an indefinite period of time. The image is excellent quality plus the tag itself is extremely durable – temperature, chemical, tear, scratch and smear resistant. Alpha Systems provides the complete collection package of thermal transfer printer, preservation tag stock and ribbon.

**Alpha Systems, 13509 East Boundary Road, Midlothian, Virginia 23112.**

**Tel: (804) 744-9870**

**Email: [info@alphasystemsva.com](mailto:info@alphasystemsva.com)**

**On the web at [www.alphasystemsva.com](http://www.alphasystemsva.com).**

## SPNHC's Travel Grant Program

The Society for the Preservation of Natural History Collections (SPNHC) is pleased to announce a NEW Travel Grant Program designed to assist members with the costs of attending the Society's annual meeting. The first grants will be available for attendance at the 2010 Annual Meeting of the Society in Ottawa.

A total of \$3,000 has been allocated to the program and grants will be for a minimum of \$750 USD each. The deadline for application is March 31, 2010. Some conditions apply.

To find out more about this exciting program or to apply, visit:

<http://www.spnhc-cba2010.org/awards.html>



*25th Anniversary Year*

**SPNHC**

ADVANCING COLLECTIONS CARE

## Canadian Conservation Institute (CCI)

Electronic copies of CCI Notes in English (<http://www.cci-icc.gc.ca/crc/notes/index-eng.aspx>) and French (<http://www.cci-icc.gc.ca/crc/notes/index-fra.aspx>) are now available FREE to everyone on the CCI Web site. Print copies will no longer be available for purchase.

CCI Notes deal with topics of interest to those who care for heritage objects and collections. Intended for a broad audience, CCI Notes offer practical advice about issues and questions related to the care, handling, and storage of heritage objects.

---

## WANTED - SPNHC representative for RC-AAM

The Registrars Committee, American Association of Museums (RC-AAM) endeavors to increase professionalism among museum registrars through educational programs and publications, establish standards of professional practice, and create an atmosphere of understanding and respect, of communication and cooperation among registrars, between registrars and other museum professionals, and between registrars and individuals in related service fields.

I recently learned that Elizabeth Merritt, our present representative, is no longer the AAM staff liaison to the Registrars Committee and has requested that we look for another volunteer. This is an important group with which to maintain a tie since they focus on professional standards and practices for museum registrars. SPNHC representatives report on activities to Council and the membership prior to the Annual Business Meeting.

If you are active in both the RC-AAM and SPNHC and would like to help, please drop me an e-mail....

Rich Rabeler, SPNHC President

---

## Global Plants Initiative (GPI)

The Global Plants Initiative (GPI) is seeking additional partner herbaria. For herbarium collections managers who are not aware of this program, GPI is an international partnership creating a coordinated database of worldwide botanical type specimen images and related information. The project, which is supported by The Andrew W. Mellon Foundation, began with African plants in 2003, later extended its focus to Latin America, and now includes type specimens worldwide. Participants

capture data and create high resolution digital images of vascular type specimens from their collections. The goal of this project is a self-sustaining internet resource for botanical researchers.

Currently, more than 150 organizations from 55 countries are involved. The database includes 1,250,000 images and associated objects, of which several hundred thousand are type specimen images. When complete, the digital library will include images of more than 2 million type specimens.

Partner institutions need to hold a minimum of 500 botanical type specimens to apply for funding; however, smaller institutions may combine resources to form consortia in order to obtain support. The Mellon Foundation has provided HerbScan equipment (modified high-resolution scanners adapted to support the type specimens during imaging) as well as funding for staffing and computer equipment. Each scan is made at 600 dpi resulting in an image of approximately 200 MB. These show a great deal of information online. The benefits to researchers are that more than one person can access type images simultaneously and many type specimens are available simultaneously. The benefit to collections is that the online availability of images will reduce potential damage from shipping them to researchers.

The shared digital library, currently in beta mode, will be available through JSTOR subscription. JSTOR will provide access for not-for-profit institutions in developing countries either free of charge or at very low cost.

For information on how to join this initiative, please contact Doreen Tinajero ([DNT@mellon.org](mailto:DNT@mellon.org)).

---

## COLLECTION FORUM

### Manuscripts Needed!!

Collection Forum, the official journal of SPNHC, is seeking manuscripts for our upcoming volumes. Collection Forum is the perfect publication to:

- disseminate results from grants and projects,
- expand on a talk at the SPNHC Annual Meeting, or
- describe best practices developed at your institution.

Feel free to contact the managing editor, Susan Butts, at [susan.butts@yale.edu](mailto:susan.butts@yale.edu) or (203) 432-3037 with questions, to discuss your ideas for possible papers, or if you are ready to submit a manuscript. Instructions to authors are available on the SPNHC web site.



25th Anniversary Year

SPNHC

ADVANCING COLLECTIONS CARE

## SPNHC Membership Profile

*We are continuing with our new series: Membership Profiles. Our members play many different roles from collection management and conservation to databasing and informatics to research and education. Most of our members come from a traditional research background while many new members are coming from the museum studies field. Our hope is to introduce our membership to a variety of individuals who are playing very dynamic roles in their museum's activities. We are casting our net broadly and selecting individuals from institutions of all sizes and backgrounds.*

### SNAPSHOT:

**What is your name?** *Kelly Sendall*

**What is your position?** *Manager, Natural History*

**Where do you work?** *Royal British Columbia Museum*

**How many years have you been working in this capacity?** *I started with the RBCM as Invertebrate Collection Technician in January 1991, and became Collection Manager for Invertebrates, Fish, Reptiles and Amphibians in 1995, and Senior Collection Manager for Invertebrates, Fish, Reptiles and Amphibians in 2001. I became Manager of Natural History in May 2007.*

**When did you join SPNHC?** *I joined in 1992. I worked on the Local Organizing Committee to host the meetings in Victoria in 1993. I have been Chair of the Elections Committee since 2006.*

### IN-DEPTH:

**What drew you to the natural history field?** *My father was an avid bird watcher and took me along many times when I was a young kid. I became fascinated with the detail of the field books and bird fauna but later in life found the completely different fauna of the marine intertidal even more interesting.*

**Describe the nature of the collections you work with.** *As manager I supervise all the natural history collections and research staff. The RBCM has a provincial mandate to develop the collections to represent the natural history of British Columbia. There are eight collections: Entomology, Ornithology, Earth History, Mammals, Botany, Ichthyology, Invertebrates, and Herpetology. Mosses, lichens, and algae are not included in the collections.*

**What are your responsibilities for them?** *Developing our long term strategy on collection development, research, and accessibility to the collections.*

**Describe some of your activities.** *Working closely with the curators and collection managers as a team to achieve our long term goals. Planning for improvements to the collection and research facilities in Natural History.*

**What do you find most interesting about your work?** *Enlightening visitors to the wealth and breadth of our collections and the importance of the research undertaken here. Discovering ways to collaborate with universities, institutions, different levels of government and other museums to share efforts in improving the collections and access to them.*

**What accomplishments are you most proud of?**

- *Our museum has launched an initiative to populate our website with regional and global identification keys for the public, students and scientific researchers.*
- *Developing cooperation with government to help complete specimen records.*
- *A recent and very significant donation to the Earth History Collection.*



Continued from page 11:  
.....Membership Profile

**What do you find most fulfilling about your work?** *The discovery of new species in BC, be they native or alien. I am very proud to be involved in the field of natural history collections given the current urgency to promote the value of our planet's biodiversity. As the world's bio-information bank, Natural history collections represent a very crucial tool in those efforts.*

**What have you learned from SPNHC to be particularly helpful?** *The yearly meetings are excellent ways to network with those in similar work with similar problems or difficulties. They provide a unique opportunity to share concerns and learn from each other, often over the short week of the conference itself!*

**How has SPNHC helped you?** *The expert advice of those in the field much longer than I is a tremendous resource. Seeing other collections while attending the conferences is always informative and useful. The NHCOLL Listserv is very useful also.*

## Tools for Invertebrate Paleontology Collections from YPM

The Yale Peabody Museum, Division of Invertebrate Paleontology, has posted tools to help you understand the transition between the original (1965) Treatise on Invertebrate Paleontology, Volume H: Brachiopoda and the revised (1997-2007) version!

Now available on the YPM-IP web page:

- Taxonomic trees (as Excel spreadsheets and PDFs) of BOTH Treatises (to family level).
- Our new Brachiopod Converter Tool - Simply enter a brachiopod family name from either Treatise and see a side-by-side comparison of taxonomic hierarchies.
- A chart (as a PDF for class use or handouts) which compares the old Treatise to the new Treatise and describes the major changes.
- You are welcome to download these files for academic/museum use, to update the lexicon in your database, or for any other academic/museum purposes.

The new features can be found at: [http://www.peabody.yale.edu/collections/ip/ip\\_brachio.html](http://www.peabody.yale.edu/collections/ip/ip_brachio.html)

A reminder that you can also search our online database at: <http://research.yale.edu/peabody/COLLECTIONS/ip/>

We've cataloged about 130,000 new specimen lots as part of an NSF grant, including photographs for nearly 25,000 specimens.

This work was funded by the National Science Foundation, Award #DBI-0545210.



## SPNHC Newsletter Advertising

### Why Advertise in the SPNHC Newsletter?

Members of SPNHC are the people who use your products and services. They are often the decision makers about products and procedures that will be used in their institutions. These people want to know about products and services that will help them do their jobs more effectively. They are interested in the latest techniques and materials available, as well as educational and travel opportunities, new publications, and events and programs related to natural history and collections.

All advertisements should be submitted as .tif or .pdf files, formatted for a PC. Ads can be placed in one sixth, quarter, half or full page. It is recommended that image resolution be 300 dpi. Electronic files may be e-mailed ([abentley@ku.edu](mailto:abentley@ku.edu)) or sent on a disk to the newsletter editor. Any necessary printer's charges will be billed to the advertiser. Payment must accompany the insertion order and tear sheets will be sent after publication.

There is limited space in each Newsletter and space will be allotted on a first-come, first-served basis. Ad placement is at the discretion of the editor. More information can be found on the SPNHC website - [www.spnhc.org](http://www.spnhc.org).

## SciColl – an initiative for SPNHC members to watch

Richard K. Rabeler, SPNHC President

On 8-9 February 2010, I was privileged to represent SPNHC at a meeting of SciColl (Scientific Collections International) entitled "International Coordination of Interdisciplinary Global Research Infrastructure". Ninety delegates from 35 nations gathered to hear presentations about what SciColl is proposing and to discuss how it will benefit collections of many types worldwide.

The mission of SciColl is "to help scientific collections and their host institutions increase their effectiveness and the return on investments made in the long-term collections man-

agement and the training they provide to the professional workforce responsible for them". SciColl is a project fostered by the Global Science Forum (GSF), beginning as a concept that was advanced by Dutch delegates in 2006. The workplan now being formulated will emphasize best practices in the management of collections in support of access, management, effectiveness, and connectivity and help increase the value of many types of collections by promoting their use in large, multi-disciplinary, research programs.

At the present time, SciColl is a concept that, if all goes well, will be one major step closer to existence by the time we meet in Ottawa. The final documents that will be submitted to the GSF of the Organisation for Economic Co-operation and Development (OECD) are now being prepared for the OECD meeting in April. If this proposal is endorsed, the gathering of signatures for the Memoranda of Understanding to operate SciColl will begin and, again if all goes well, SciColl will be launched in early 2011. To see some of the plans for collection management envisioned as part of the SciColl initiative, I would refer you to the SciColl website ([www.scicoll.org](http://www.scicoll.org)), and more specifically to the "programme" site ([www.scicoll.org/content/programme](http://www.scicoll.org/content/programme)), where you can view the presentation made by Leo Kriegsman entitled "SciColl's proposed programme of work to improve collection management".

Two words very familiar to SPNHC members resonated throughout the conference: Best Practices. Our emphasis on trying to promote "best practices" in the natural history community continues to pay dividends; several of the members of the SciColl Steering Committee saw SPNHC participation in SciColl as a "natural fit" and were pleased to see us expressing interest in the concept. This proposal is certainly worth watching and I hope that, if both approved and launched, SPNHC can play an active role in SciColl. I would be glad to answer further questions about the meeting.

SPNHC and our views were well represented at the meeting. Besides myself, I am sure that many of you will recognize several of the names from this list: Rene Dekker (Naturalis), Christiane Quaisser (Museum fur Naturkunde, Berlin), Dries van Dam (LUMC Museum of Anatomy) – known to many as the organizing team of the SPNHC 2009 meeting in Leiden; something of a homecoming for me! – Hank Bart and Alan Prather (NSF CollectionsWeb RCN), Rob Huxley (British Museum), Leo Kriegsman (Naturalis), and Ann Therriault (Natural Resources Canada).

Three people deserve special thanks for making this trip possible. Alan Prather (NSF CollectionsWeb/Michigan State University) first told me of the meeting and that a funding proposal had been submitted to cover the costs of attendance of several people from the United States, David Schindel (Consortium for the Barcode of Life) wrote the proposal to the National Science Foundation, and W. Carl Taylor (Program Director, Improvements to Biological Research Collections Program, National Science Foundation) provided the funding which made the trip possible.

## The 2010 Carolyn L. Rose Award

For outstanding commitment to Natural History Collections Care and Management



**R. Robert Waller**

Formerly of the Canadian Museum of Nature

In recognition of his outstanding contributions to the fields of conservation and collections management worldwide, with impacts far beyond the field of natural history, the Council of the Society for the Preservation of Natural History Collections has voted unanimously to present the 2010 Carolyn L. Rose Award to R. Robert Waller. According to one reference:

*"He has steadily improved the way we address our public trust responsibilities by developing a means to demonstrate accountability and estimate the preservation potential of our actions. Others have contributed to these concepts, but only Rob has managed to synthesize their efforts, add essential academic rigor to the process, and infuse the whole with insights that stagger lesser minds."*

We hope you will join us in Ottawa this June when we present our Society's highest honor to Rob Waller and celebrate his incredible career.

Tim White, Past-President  
Chair, Recognition & Grants Committee

***This space could be yours.....***

**SPNHC Newsletter is looking for articles, news items, etc., for the next edition. Articles of 1000 words or less considered. Contact Andy Bentley ([abentley@ku.edu](mailto:abentley@ku.edu)) for information. The deadline for submissions for the next issue is August 1, 2010.**



*25th Anniversary Year*

**SPNHC**

ADVANCING COLLECTIONS CARE

11 February 2010

Dear SPNHC Member

Let your vote be counted at the SPNHC AGM on Friday 4 June 2010, at 12:30 pm at the University of Ottawa in Ottawa, ON, Canada.

You can't get to Ottawa? No problem! Make your vote count by assigning your proxy to someone else.

First, you and your proxy must be voting members of SPNHC. We will check your status when you send in this form, so don't worry about the details. However, you **MUST** send the hand-signed form to us by either mail or fax before 1 June 2010 so your form can be presented at the AGM. If you miss this deadline, your proxy voter may present this form to the SPNHC Secretary **NO LATER** than noon on Friday 4 June 2010.

Simply fill out the form (see over) to make your vote count!

Thanks!

Mail the form:  
Judith C. Price  
Secretary, SPNHC  
Canadian Museum of Nature  
PO Box 3443, Station D  
Ottawa, ON  
K1P 6P4  
Canada

OR Fax the form:  
(613) 364-4027



*25th Anniversary Year*

**SPNHC**

ADVANCING COLLECTIONS CARE

**Announcement of Annual Business Meeting and Instrument of Proxy**

**NOTICE OF ANNUAL GENERAL BUSINESS MEETING**

The 25th Annual Business Meeting of the Society for the Preservation of Natural History Collections will be held on Friday 4 June 2010, at 12:30 pm at the University of Ottawa in Ottawa, ON, Canada.

**Please visit: <http://www.spnhc-cba2010.org/>**

**AGENDA**

1. Call to Order
2. Minutes of the 2009 General Business Meeting
3. Report of the Treasurer
  - 3.1 Financial Report
  - 3.2 Appointment of Auditor
4. Report of Council meetings
5. Report of the President
6. Reports of the Standing Committees
7. Reports of the Sessional Committees
8. Unfinished Business
9. New Business
10. Recognition and Grants
11. Change of Office
12. Announcements
13. Adjournment

If you cannot attend the meeting, you may designate another member in good standing to act on your behalf. Please fill out the form of proxy below and give it to the person named or forward it by 1 June 2010 to:

**Mail the form:**  
**Judith C. Price**  
**Secretary, SPNHC**  
**Canadian Museum of Nature**  
**PO Box 3443, Station D**  
**Ottawa, ON**  
**K1P 6P4**  
**Canada**

**OR Fax the form to:**  
**(613) 364-4027**

**INSTRUMENT OF PROXY**

I, the undersigned member of the Society for the Preservation of Natural History Collections (SPNHC), hereby appoint \_\_\_\_\_ (please name a SPNHC member in good standing who can represent your views at the meeting) or, failing him/her, Judith Price, Secretary of the Society, to vote on my behalf at the Annual Business Meeting of the Society on Friday 4 June 2010, at 12:30 pm at the University of Ottawa in Ottawa, ON, Canada.

Date \_\_\_\_\_ Signature \_\_\_\_\_

Name (please print) \_\_\_\_\_



**Biodiversity**  
2010 and Beyond  
Science and Collections

## 2010 SPNHC & CBA-ABC Joint Conference

[www.SPNHC-CBA2010.org](http://www.SPNHC-CBA2010.org)

Ottawa, Ontario, Canada  
May 31 – June 5, 2010

### Important Deadlines:

Early bird registration until March 31, 2010  
Abstract submission deadline: March 31, 2010  
SPNHC Travel Grant application deadline: March 31, 2010  
University Residences: reserve before April 14, 2010

Register now: [www.spnhc-cba2010.org](http://www.spnhc-cba2010.org)

For the first time, the international Society for the Preservation of Natural History Collections (SPNHC) and the Canadian Botanical Association (CBA/ABC) are holding a joint annual conference, hosted by the Canadian Museum of Nature. Fully synchronized programs will allow participants from both organizations to attend any of the concurrent sessions and participate in many joint conference activities.

### Our Location:

Canada's Capital and the country's fourth largest metropolis, Ottawa is located in Eastern Ontario at the junction of three majestic waterways and just across the Ottawa River from Gatineau, Quebec. A cosmopolitan yet surprisingly intimate G8 capital, Ottawa is a place where you can immerse yourself in Canadiana and culture, embrace and enjoy the great outdoors, even in the heart of the city, join the celebration at year-round festivals and events, and shop and dine in a relaxed urban setting of distinctive neighbourhoods and districts.

The meeting will be held on the University of Ottawa Campus, with the focal point being Tabaret Hall, built in 1905. At the Icebreaker Soirée and during health breaks, an anticipated 400-500 attendees will enjoy the lovely Chapel, the impressive rotunda and the spacious lawn in front of the building. Technical sessions and symposia will be held in brand-new, state-of-the-art auditoriums in the Desmarais Building, located just behind Tabaret Hall.

The University of Ottawa is located in the core of downtown Ottawa, along the Rideau Canal, a UNESCO World Heritage Site. Strategically situated at walking distance from Parliament Hill and many cultural, culinary, and tourist spots in town you and your friends will have an unforgettable time. And let's not forget the great diversity of drinking holes...

The Canadian Museum of Nature (CMN) is Canada's national museum of natural history. We will be celebrating the completion of the refit of our century-old Victoria Memorial Museum Building, with all new exhibit galleries, which commenced in 2004. Whether dinosaurs, mammals or birds are your thing, or you prefer the big picture view of the Earth and Water Galleries, ensure you save some time on your calendar to join in the celebration of this new treasure and in the International Year of Biodiversity.

### Program:

Paper and poster presentations are scheduled for June 2 to 4, 2010. Carefully timed concurrent sessions will allow participants from both societies to maximize their learning and networking opportunities.

### Keynote and Plenary Session:

- o Keynote Address - *A Census of All Life* - By Paul Hebert, University of Guelph, currently Director of the Biodiversity Institute of Ontario and of the Canadian Barcode of Life Network.



- o Plenary Session — *Panel on Biodiversity Informatics Megastrategies: A Global Vision*

With contributions from Guy Baillargeon of the Canadian Biodiversity Information Facility, Penny Berents of the Atlas of Living Australia, Anne Bruneau of Canadensys, John R. Wiczorek speaking on various American Bioinformatics Initiatives, Walter Berendsohn of the European Distributed Institute of Taxonomy and moderated by James Macklin, Director of Collections and Informatics, Harvard University Herbaria.

Scientific Symposia:

- o Dispersal in Fungi and Plants: Co-sponsored by the CBA/ABC Mycology Section & Systematics and Phytogeography Section.
- o Roles and Status of Canadian Herbaria: Co-sponsored by the CBA/ABC Systematics and Phytogeography Section & Mycology Section.
- o Special Lecture on Teaching: Dr. Kate Frego of the University of New Brunswick, St John campus, and winner of a 3M Teaching fellowship in 2008 will be presenting a special lecture at the conference, hosted by the CBA-ABC Teaching Section. All are invited to attend!

Panel Discussion: — *Best Botanical Teaching Practices: Reaching Students in the Classroom, Lab, and Field*

The CBA-ABC Teaching Section is proud to host this Panel Discussion. The panelists from institutions across Canada, all of whom have been recognized for teaching excellence, will discuss aspects of teaching and learning as these processes occur in different settings and will engage the audience in discussion of ideas and technologies that work in three different teaching environments.

The Weresub Lecture is an annual CBA/ABC lecture sponsored by the CBA Mycology Section, who select and invite a distinguished scientist working in a mycology-related discipline to deliver the lecture at the annual CBA/ABC meeting. It is named in honour of Dr. Luella K. Weresub (1919-1979), a well-known mycologist who worked at the Biosystematics Research Institute of Agriculture Canada. This year's honouree is Dr. Irwin (Ernie) Brodo, Research Lichenologist Emeritus at the Canadian Museum of Nature.

Special Interest Group Discussions: Wednesday, June 2, 2010

1. Transport of specimens - dangerous goods and country specific issues
2. Destructive Sampling
3. WEB 2.0: The potential to improve collections access and data quality
4. Creative Destruction - How to survive in and with your new building
5. Integrated Pest Management
6. Orphan collections and their excess baggage
7. Volunteers: Building and keeping a viable workforce
8. Conservation and "The Rest of the Museum"
9. Botany Collections Management

Workshops: Saturday, June 5, 2010

1. Lichen Identification
2. Some Adhesives of Interest to Natural History Collections
3. Georeferencing
4. Designing Facilities for Fluid Preserved Collections

While in town, you may also want to consider the following workshop, offered by the Canadian Association of Conservators, in partnership with the Canadian Conservation Institute:

The Conservation of Feathers: An Introductory Workshop

Three-day workshop: Monday June 7 to Wednesday June 9, 2010

Field Trips & Collections Tours:

Five full-day field trips on Tuesday, June 1st.

Continued from page 17:  
 .....SPNHC 2010

- o The Quyon Alvar
- o Burnt Lands Provincial Park
- o Gatineau Park & Tree Identification
- o Geology for Geophytes
- o Biking Ottawa Waterways: National Capital Nature

Two half-day collection tours on Tuesday, June 1st

- o Tour of Agriculture and Agri-Food Canada (AAFC) at the Central Experimental Farm
- o Behind the scenes in the Canadian Museum of Nature Collections

One full-day, post-conference field trip on Saturday, June 5th

- o Botanical hike in Gatineau Park

Registration for this conference will include a tote bag with conference materials (including a water bottle, a travel mug and a pen), access to all programmed sessions and symposia organised by both SPNHC & CBA, the Icebreaker Soirée, one of the Society Mixers at the newly-renovated Canadian Museum of Nature (Victoria Memorial Museum Building), and coffee breaks and lunches planned as part of the programmed activities on Wednesday to Friday. Field trips, tours, banquets, and workshops are optional.

The registration form also provides an option to buy additional promotional items such as conference bags, water bottles, travel mugs and pens. All proceeds help support student attendance at SPNHC conferences in following years.

#### Greening the Conference:

The 2010 SPNHC & CBA-ABC Joint Conference will be distinguished by informed decision-making with respect to the effect of our meeting on the environment. A Greening Committee dedicated to reviewing the environmental implications of all aspects of the conference, from transportation to catering to presentations, will help guide choices within the limitations of responsible, respectful fiscal practice.

#### SPNHC's 25th Anniversary Celebration:

In 1985, the Society for the Preservation of Natural History Collections (SPNHC) was created to meet the concerns of a growing number of individuals involved with the development, management, and care of natural history collections. After 25 years of existence, the Society continues to be unique among natural history professional organizations, particularly because of its ever increasing international scope and its multidisciplinary approach to collections management and care.

In celebration of the Society's 25th Anniversary, a number of activities are planned during the Conference to recognize the Society and its members' many accomplishments over the years. Among the planned activities, you will not want to miss the recognition ceremony during Thursday evening's banquet, acknowledging the special contribution of the founding members of SPNHC. A special display at the Tradeshow will invoke memories of past events and highlight our major achievements in the promotion of collections care.

#### Special Collection Forum Volume for SPNHC's 25th Anniversary:

To celebrate the Society's 25th Anniversary, we are inviting submission of manuscripts for a special Volume 25 of *Collection Forum*, the internationally respected, peer reviewed journal of the Society for the Preservation of Natural History Collections (SPNHC).

Papers published in *Collection Forum* are intended to reflect the spirit of SPNHC, a multi disciplinary organization composed of individuals who are interested in development and preservation of natural history collections. Natural history collections include specimens and supporting documentation, such as audio-visual materials, labels, library materials, field data, and similar archives. Preservation refers to any direct or indirect activity providing continued and improved care of these collections and supporting documents. The Society actively encourages the participation of individuals involved with all aspects of natural history collections. Publication selection criteria have been revised recently to reflect the fact that papers in *Collection Forum* do not only address research on natural history collections care. For further information on *Collection Forum* and instructions to authors, contact the Editor, Dr. Susan Butts, to discuss the suitability of your paper for inclusion in *Collection Forum*.

We look forward to welcoming you, old friends and new, to Ottawa, Canada's capital city. For further information, including registration details, log on to **[www.SPNHC-CBA2010.org](http://www.SPNHC-CBA2010.org)**.

*Continued from page 2:  
.....EDIT cybertaxonomy...*

### *Descriptive data*

Software for the import and export of structured descriptive data to the Common Data Model, e.g. from Delta Access, Lucid and XPer2, and for the import and export of keys is currently being developed.

### *The Taxonomic Editor (EDITor)*

The Taxonomic Editor (see fig. 1) enables the structured entry and presentation of taxonomic information such as hierarchies, synonyms, taxonomic concepts, descriptions and literature references. This information is stored in the CDM Community Store and can be enabled for direct viewing in the data portal. The Editor is divided into three fields, with the taxonomic tree on the left, the free text field in the centre and the properties on the right.

The taxonomic tree shows the taxonomic hierarchy. In contrast to earlier software developments, which only allowed a form-based entry of the data, the free text field of the Taxonomic Editor is now faster and easier to use. It has two sections: the Names tab for nomenclatural information and the Descriptive tab. The text is parsed as it is entered, i.e. it is broken down, the relevant attributes are assigned, and it is saved in a structured form. The parsed information is shown in the properties field, allowing the editor to check immediately whether the text has been given the right structure and if necessary correct it. If the text 'Trapogon geropogon Rouy, Fl. France 10: 8, 1908' is entered, for example, the information can be seen in the properties field, broken down by name, author, nomenclatural reference and date of publication. Taxonomic relations such as heterotypic and homotypic synonyms can be entered in the Names tab of the free text field, while additional information can be entered in the Descriptive tab, either in user-defined unstructured fields or in structured form (e.g. information on distribution). The Power User Interface in the Editor allows the editing of several taxa at the same time in table form. This data sheet view is particularly suitable for correction work. In addition, the Interface has a function that prevents duplication: data is often duplicated, particularly at the beginning of an editing session, due to imports from a variety of data sources. The information from these data sets can be combined using this function.

### *Specimen Explorer*

A further service offered by the EDIT Platform is the EDIT Specimen and Observation Explorer for Taxonomists, a search portal which offers extensible access to more than 150 million entries in the GBIF network and the import of search results into the Platform. Specimen data handling by means of the EDITor is still under development.

### *Bibliographic tools*

In addition, software tools are currently being developed in collaboration with BHL (Biodiversity Heritage Library) Europe to facilitate the search for and access to taxonomic literature. This includes both a meta-search of library catalogues and full-text retrieval.

### *Field data*

The software for a handheld device with GPS and GIS functions has been adapted in a prototype version to meet taxonomic specifications and thus enable the efficient collection of data in the field. The data is linked to the GBIF network via a database developed especially for field collection and can be retrieved via the Specimen Explorer.

The Platform for Cybertaxonomy is a versatile and flexible instrument which will make it possible to store and publish data in a single, structured process - from collection through support in information research to publication. The Platform can be used as an efficient central tool for taxonomic revision.

---



---

## **National Park Service Statement On Benefits-Sharing**

The National Park Service (NPS) is proposing to implement benefits-sharing agreements with scientists who conduct research in National Park System units. Such agreements could return benefits to the park and the public if the research results lead to the development of commercially valuable materials. The proposed changes are outlined in a Benefits Sharing Final Environmental Impact Statement (EIS) which has just been completed and released to the public.

The preferred alternative in the Final EIS does not change the existing strict research permit process. Regulations would continue to prohibit issuing permits for activities that would adversely affect, impact, or damage public health and safety, visitor use activities, proper use of NPS facilities, scientific research, environmental or scenic values, or a park's natural or cultural resources. They would continue to prohibit the commercial use or sale of park specimens and prohibit damage to or consumptive use of park resources.

Under the preferred alternative, a benefits-sharing agreement may be negotiated with researchers who wish to commercialize their research results. The permit process would remain separate from any benefits-sharing negotiations. Prior to the development of any agreements, a prospective permittee must meet all the regulatory requirements for obtaining a research permit; the park unit must comply with all resource protection requirements; and, a permit must be issued. Typically, negotiations would not occur until after research has already been conducted.

*Continued on page 20*

Continued from page 19:  
.....NPS Benefit Sharing

The proposed changes are not about commercializing the parks, but are about the public receiving some benefit from commercial projects that result from analysis of samples collected in national parks.

The best known example of a viable commercial product arising from research results related to the study of biological material originating in national parks was the invention of the Polymerase Chain Reaction (PCR) process. The PCR process, which facilitates the widespread use of DNA analyses, often uses an enzyme isolated from the *Thermus aquaticus* bacteria collected in Yellowstone National Park.

The NPS has identified four types of non-monetary benefits that could occur under some or all benefits-sharing agreements: knowledge and research relationships, training and education, research-related equipment, and special services such as laboratory analysis. All benefits received under any type of benefits-sharing agreement would be dedicated to the conservation of resources protected and managed by the National Park Service.

Currently, an average of more than 200 national parks annually host independent research efforts, authorized under permits generated under current policies and procedures. Only a small portion of NPS research permittees are expected to be affected by benefits-sharing.

The analysis and recommendations contained in the Final EIS will be reviewed by the Director of the National Park Service. The Director will make the final decision and can choose the preferred alternative or any combination of management approaches addressed in the Final EIS. The Director is expected to issue the Record of Decision (ROD) in early 2010.

The Final EIS is available online at <http://parkplanning.nps.gov> by selecting the "Washington Office". It is also available on CD or in hard copy by writing the Benefits Sharing FEIS Team, Yellowstone Center for Resources, P.O. Box 168, Yellowstone National Park, Wyoming 82190.

---



---

## SPNHC 2010 DemoCamp: Call for Demonstrations

Submissions of proposals are solicited for DemoCamp session presentations at the Society for the Preservation of Natural History Collections (SPNHC) conference in Ottawa, May 31-June 5, 2010. DemoCamp provides a venue for creators to promote their technological solutions to advance the field of museum curation with broad applications for biology and biodiversity informatics.

Computer demonstrations are welcomed in any technologies relevant to biologists, collections managers, or biodiversity

information managers. Technologies demonstrated may include, among other things, collections/ transaction management software, georeferencing web-based applications, and programs for analysis of data/ images. DemoCamp presentations should feature some of the latest developments in currently available products/ software/ applications as well as ongoing research projects and prototypes.

Live demonstrations of these technologies will raise awareness of new (and improved) tools available for data acquisition, documentation, and synthesis. Demonstrations will also provide a venue for idea exchange and feedback from potential users. Demonstration abstracts will appear in the conference proceedings.

### Format

The typical, strictly-timed format of a DemoCamp gives each presenter 15 minutes for a presentation plus 5 minutes for questions. *No PowerPoints or other "canned" presentations are allowed.* Only live demonstrations of functional software or applications may be presented.

Demonstrators must provide their own laptops with all necessary software installed. A projector and internet connection will be provided.

### Submissions

Demonstration proposals (abstracts) must be submitted by March 31, 2010. Abstracts should be prepared according to the guidelines defined on the conference website (<http://www.spnhc-cba2010.org/abstract.html>) and must be submitted electronically via the registration system at <http://www.regonline.ca/Checkin.asp?EventId=725500>. The submissions will undergo peer review. At least one author should register and attend the conference.

- ◆ The abstract should emphasize the purpose of the technology and the intended audience or users of the technology. What are the major components of the product? What is novel about the solution you present? Compare your technology with similar products if such exist. Is your product currently available to prospective users or still under development? Is your product proprietary or open source? Is it software or a web-based application?

In addition to the normal abstract submission requirements for SPNHC 2010, a COPY of your submitted abstract should be sent to the session organizer, Amanda Neill, at [aneill@brit.org](mailto:aneill@brit.org).

### Accepted Abstracts

All submissions will be acknowledged within a few days. Proposals will be reviewed for relevance, innovation, technical quality, and greatest predicted appeal to the SPNHC audience. Demonstrations will be selected by the DemoCamp

organizing committee. Accepted abstracts will be required to provide a description of technical details (licensing, platforms supported, etc.) in a standard factsheet that will be distributed to all attendees.

Further details on the date and time of the demonstration session(s) will be determined and provided at a later date. Please send any inquiries to the session organizer at [aneill@brit.org](mailto:aneill@brit.org).

#### Important Dates

- March 31 - Abstract submissions due
- April 16 - Notification of acceptance/ rejection
- May 1 - Factsheets for accepted demos due
- May 31-June 5 - SPNHC & CBA-ABC joint conference

#### Organizer

Amanda K. Neill, Director of the Herbarium, Botanical Research Institute of Texas, Fort Worth TX USA.



25th Anniversary Year

**SPNHC**

ADVANCING COLLECTIONS CARE

**800-535-6987**



**Electronic Imaging  
Materials, Inc.**

**We Make Barcoding Easy**

Visit us at the  
**SPNHC & CBA-ABC**  
2010 Joint Conference  
Ottawa  
June 2 - 4, 2010

**www.eiminc.com**

## The Return of Fishnet

Hank Bart<sup>1</sup>, Ed Wiley<sup>2</sup>, Dave Vieglais<sup>2</sup>, Nelson Rios<sup>1</sup>, Andy Bentley<sup>2</sup>, Laura Russell<sup>2</sup> and Djihbrihou Abibou<sup>1</sup>.

<sup>1</sup> Tulane University Museum of Natural History, Belle Chasse, LA 70037

<sup>2</sup> Biodiversity Institute, University of Kansas, Dyche Hall, 1345 Jayhawk Blvd., Lawrence, KS 66045

A newly redesigned Fishnet2 portal is set for launch (<http://fishnet2.net/index.html>). Like the other taxon-based networks (MaNIS, ORNIS & HerpNET), Fishnet2 is based on the Distributed Generic Information Retrieval Protocol (DiGIR). However, Fishnet2 differs in that data are served from a centralized cache, allowing faster response times, greater stability, and an overall better user experience. The current Fishnet2 model of serving data from a central cache is similar to the way GBIF serves data. However, there are notable differences in the FishNet2 design. First, the entire Darwin Core specification is cached and indexed, allowing search results to be returned as full datasets. This differs from GBIF, which only indexes certain Darwin Core fields. This feature allows the FishNet2 portal to provide data on fields not indexed by GBIF, such as "number of specimens", an important data item for lot-based collections like fishes.

We also improved the search interface to provide cleaner, simpler, and more intuitive search capabilities, while retaining fully functional advanced searching. The developmental roadmap for FishNet2 includes taxonomic resolution, integration with BioMaps for advanced data visualization and analysis in a web based environment, support for TAPIR, IPT and direct data uploads via a curatorial interface, usage reporting interfaces for providers, and simplified data consumer feedback. An example of the latter is a feature that allows data consumers to report data inconsistencies to data curators through links embedded in a KML download. Users who download and visualize search results in Google Earth are provided with links in each data record, which they can click to notify data curators of errors in the record, such as an improperly placed map location (Figure 1).

At present, there are 26 institutions or multi-institution organizations providing data to the Fishnet2 cache. These institutions house 4,050,290 records, of which 1,043,436 are in the Fishnet2 cache. The Fishnet2 Team is pursuing data sharing agreements with fish collections at 110 additional institutions, which will ultimately increase the number of data records to 70 million. Another feature of Fishnet2 that we hope to implement in 2010 is a collaborative georeferencing portal. This portal works in conjunction with the GEOLocate georeferencing software system. It allows teams of researchers to access collection-event data for regions of interest from the Fishnet2 cache, and work collaboratively to quickly and efficiently georeference the collection locations. The efficiency of the system derives from a locality-matching capability, which com-

Continued from page 21:  
.....Fishnet 2...

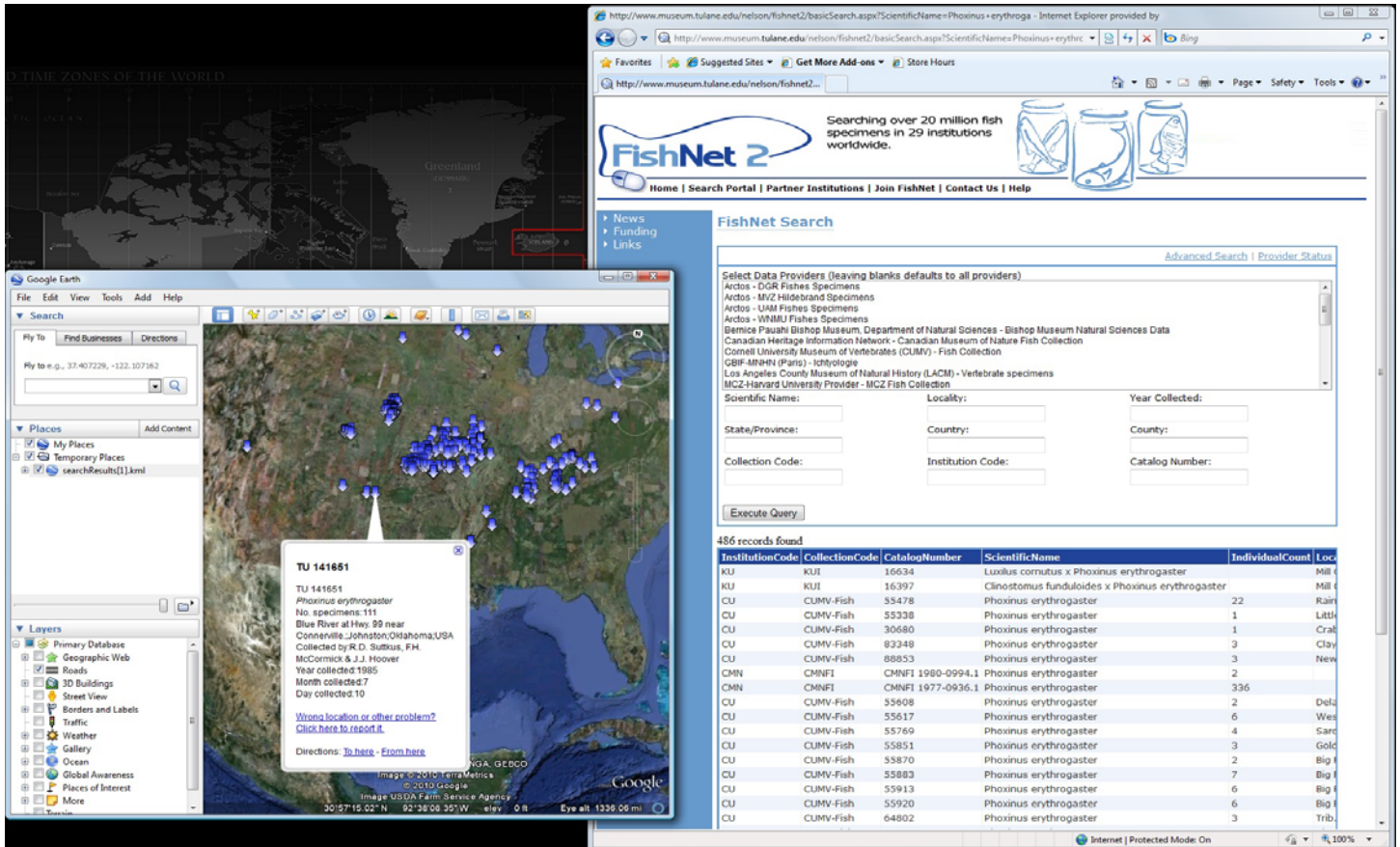


Figure 1: Fishnet2 interface together with visualization of records in Google Earth showing specimen information bubble and error reporting links.

compares locality text strings for a batch of localities for a particular region, and ranks the localities based on the similarity of the description. After georeferencing and verifying one locality, a user simply has to check all localities with the same description and all of the checked localities will be assigned the same latitude/longitude coordinates. We plan to implement this system with a collaborative grant project, during which we aim to georeference and verify all of the digitized fish collections in Fishnet2.

A value-added feature of the Fishnet2 portal is that it will improve the quality of data in fish collections (taxonomic nomenclature and identification of specimens, geospatial distribution), and by extension, the quality of data served to the user community. If your collection is not currently part of Fishnet2, please contact a member of the Fishnet2 development team for instructions on how you can join.

### ***This space could be yours.....***

**SPNHC Newsletter is looking for articles, news items, etc., for the next edition. Articles of 1000 words or less considered. Contact Andy Bentley (abentley@ku.edu) for information. The deadline for submissions for the next issue is August 1, 2010.**

## **Publications of Interest**

This section is from the Citations Sub-committee of the Conservation Committee and is chaired by Larissa Busch. Citations were submitted by, Larissa Busch (LB), Diana Dicus (DD), Elizabeth Leith (EL), Barbara Moore (BM), Rebecca Peters (RP), Ann Pinzl (AP), Cindy Ramotnik (CR), Marcia Revelez (MR), John Simmons (JS), and Janet Waddington (JW). Contributions, suggestions, and comments may be submitted to Larissa Busch: Sam Noble Oklahoma Museum of Natural History, 2401 Chautauqua, Norman, OK 73072; (405) 325-2828 (voice); (405) 325-7699 (fax); lrbusch@ou.edu (e-mail).

[editors/announcement]. 2009. Kew's Millennium Seed Bank Partnership collects 10% of world's wild plant species. *Plant Science Bulletin* 55(4): 154-155. (RP)

Abstracts from "International Conference Geological collections and museums: Mission and management". Coimbra, Portugal, 5-6 June, 2009. *Journal of Paleontological Techniques*, Special Volume number 6, 2009. (mostly in Portuguese) (JW)

— [http://www.jpaleontologicaltechniques.org/pasta3/JPT%20N6/Pdf/JPT\\_n006\\_special\\_volume.pdf](http://www.jpaleontologicaltechniques.org/pasta3/JPT%20N6/Pdf/JPT_n006_special_volume.pdf)

Allen, D.E. 2009. Some further light on the history of the Vasculum. *The Vasculum* 4(2): 7-9. (AP)

- Anonymous. 2009. Thinking inside the box. *Natural History* 118(2): 44. (AP)  
— Popular account of rehousing fossils from mammal type collection.
- Araújo, R., O. Mateus, A. Walen, and N. Christiansen. 2009. Preparation techniques applied to a stegosaurian dinosaur from Portugal. *Journal of Paleontological Techniques* 5: 1-23. (JW)  
— <http://www.jpaleontologicaltechniques.org/pasta3/JPT%20N5/Bulletin.html>
- Baker, E. 2009. Website conservation: A case study on the NatSCA website. *NatSCA News* 18: 53-54. (AP)
- Balter, M. 10 July 2009. Bringing Hominins back to life. *Science* 325: 136-139. (RP)
- Bawaya, M. 8 January 2010. Virtual archaeologists recreate parts of ancient worlds. *Science* 327: 140-141. (RP)
- Beaudoin, A.B. 2009. Small Wonder: Using SEM Images to Exhibit the "Small Stuff". *Curator* 52(3): 261-72. (JW)
- Bellman, D. 2009. Flag rolling and storage. *Conserve O Gram* 16/5: 1-3. (MR)
- Beverung, M.E. 2009. Evaluation of gender representation of museum collection positions in the United States. *Collections* 5(2): 159-177. (AP)
- Brown, P.A. 2009. The Natural History Museum, London's Entomology collections: the origin or what has been. *NatSCA News* 17: 29-33. (AP) (JS)
- Brown, P.A., and D. Goodger. 2009. What do you do with papered insect collections? A new storage system for the Odonata 'papered' collection at the natural History Museum, London. *NatSCA News* 18: 45-48. (AP) (JS)
- Calabrese, G.M. and M. Velayos. 2009. Type specimens in the Vidal Herbarium at the Real Jardín Botánico, Madrid. *Botanical Journal of the Linnean Society* 159: 292-299. (RP)
- Canadian Conservation Institute. 2008. Preserving Aboriginal Heritage: Technical and Traditional Approaches. Proceedings of Symposium 2007. Canadian Conservation Institute. Paperback, 406 pp., b/w and color illustrations. (JW)  
— <http://www.cci-icc.gc.ca/symposium/index-eng.aspx?template=print>
- Careva, G., M.P. Nugari, and O. Salvadori (eds.) 2009. Plant Biology for Cultural Heritage: Biodeterioration and Conservation. *Studies in Conservation* 54(3): 191. Reviewed by Mary-Lou Florian. (BPM)
- Chandra, V. 2009. Digitization of the Dehradun Herbarium (DD; India). *Taxon* 58(2): 679-681. (AP)  
— Summary of plan and recent activity.
- Craven, D.J. 2009. Revealing a relict collection: geology at Bolton Museum and Archives Service. *NatSCA News* 17: 55-59. (AP) (JS)
- Crim, W.L., M. Morris, and L.C. Wharton. 2009. Planning successful museum building projects. AltaMira Press, 260 pp. (MR)
- Curtis, N., M.E.H. Jones, S.E. Evans, P. O'Higgins, and M.J. Fagan. 2009. Visualising muscle anatomy using three-dimensional computer models - an example using the head and neck muscles of Sphenodon. *Palaeontologia Electronica*: 12.3.7T. (JW)  
— [http://palaeo-electronica.org/2009\\_3/194/194.pdf](http://palaeo-electronica.org/2009_3/194/194.pdf)
- deBeaulieu, M. 2009. Restoration of a Galapagos tortoise at Norwich Castle Museum and Art Gallery. *NatSCA News* 18: 31-35. (AP) (JS)
- Deichmann, J.L., J. Boundy, and G.B. Williamson. 2009. Anuran artifacts of preservation: 27 years later. *Phyllomedusa* 8(1): 51-58. (JS)
- DeNatale, A., and N. Cellinese. 2009. Imperato, Cirillo, and a series of unfortunate events; a novel approach to assess the unknown provenance of historical herbarium specimens. *Taxon* 58(3): 963-970. (AP)
- Dirk, C., J. Druzik, and D. Kronkright. 2009. Lighting America's treasures: new technologies at the Georgia O'Keefe Museum. *AIC Newsletter* 34(6): 1-8. (BPM)
- Endersby, J. et al. 2009. Lumpers and splitters: Darwin, Hooker, and the search for order. *Science* 326: 1496. (RP)
- Erkens, R.H.J., H. Cross, J.W. Maas, L. Hoenselaar, and L.W. Chatrou. 2008. Assessment of age and greenness of herbarium specimens as predictors for successful extraction and amplification of DNA. *Blumea* 53: 407-428. (AP)
- Ertel, D., 2009. Risk assessment.. *AIC Newsletter* 34(5): 8-10. (BPM)
- Grant, B. 2010. Should evolutionary theory evolve? Some biologists are calling for a rethink of the rules of evolution. *The Scientist* 24(1): 25-30. (JS)
- Grayer, S. 2009. Is there a viable future for herbaria in British museums? *NatSCA News* 18: 8-18. (AP) (JS)
- Grayer, S. 2009. The Royal Horticultural Society's Colour Chart: an everyday tool for use in the herbarium. Its past, present and future. *NatSCA News* 18: 19-26. (AP) (JS)
- Harold, J.M. 2009. A custom restraint to mitigate against damage to museum objects due to seismic activity. *Conserve O Gram* 21/12: 1-2. (MR)
- Haug, C., J.T. Haug, D. Waloszek, A. Maas, R. Frattigiani, and S. Liebau. 2009. New methods to document fossils from lithographic limestones of southern Germany and Lebanon. *Palaeontologia Electronica*: 12.3.6T. (JW)  
— [http://palaeo-electronica.org/2009\\_3/193/193.pdf](http://palaeo-electronica.org/2009_3/193/193.pdf)
- Holden, C. (ed.). 2010. Iraqi artifacts go online. *Science* 327: 129. (RP)
- Holmes, C. 2009. Making collections count - the lessons learned for museums and developing Leicestershire County Council Collections Team from the Community Heritage Initiative. *NatSCA News* 17: 60-67. (AP) (JS)
- Jiao, L. 2009. China searches for an 11th-hour lifesaver for a dying discipline. *Science* 325: 31. (RP)
- Kataeva, M., N. Panichev, and A.E. van Wyk. 2009. Monitoring mercury in two South African herbaria. *Sci. Total Environm.* 407(3): 1211-1217. (AP)
- Lawler, A. 2009. Archaeologists raise the old with the new. *Science* 325: 936-940. (RP)
- Lyons, B. 2009. JSTOR expands free access in developing nations. *Plant Science Bulletin* 55(1): 20. (RP)
- Mares, M.A. 2009. Natural science collections: America's irreplaceable resource. *Bioscience* 59(7): 1-2. (MR)
- Mateus, O., M. Overbeeke and F. Rita. 2008. Dinosaur Frauds, Hoaxes and "Frankensteins": How to distinguish fake and genuine vertebrate fossils. *Journal of Paleontological Techniques* 2: 1-5. (JW)  
— <http://www.jpaleontologicaltechniques.org/pasta3/JPT%20N2/Bulletin.html>
- Matson, K. 2009. Packing a framed two-dimensional object. *Conserve O Gram* 17/6: 1-4. (MR)

Continued from page 23:  
.....Pubs of Interest

McAlister, E. 2009. The organisation and distribution of electronic data at the Natural History Museum. *NatSCA News* 17: 34-36. (AP) (JS)

McCarthy, D. 2009. Creating cultural resource spatial data standards. *CRM: The Journal of Heritage Stewardship* 6(2): 79-83. (JS)

Moore, S. 2009. SPNHC Conference, Leiden, July 2009 -Bridging Continents. *NatSCA News* 18: 36-44. (AP) (JS)

Moore, S. 2009. Carpet beetle and other insect pest infestation relating to bird re-feathering and repair. *NatSCA News* 18: 49-52. (AP) (JS)

Noè, L.F. 2009. The Alfred Leeds Collection of Fossil Vertebrates: past, present and future. *NatSCA News* 17: 10-13. (AP) (JS)

Pajak, M. 2009. Guide to resin embedding of natural history specimens. *NatSCA News* 17: 68-74. (AP) (JS)

Pajak, M. 2009. Excel for data cleaning. *NatSCA News* 18: 27-30. (AP) (JS)

Peck, R. L., J.B. Bailey, R.J. Heck, and N.T. Scaiff. 2009. X-Ray CT Scan as an Aid to Identification and Description of a New Bivalve Species (Mollusca) from the Mississippian Bluefield Formation, Southeastern West Virginia. *Journal of Paleontology* 83(6): 954-961. (JW)

Pennisi, E. 2009. No genome left behind. *Science* 326: 794-795. (RP)

Porter, D.M., G. Murrell and J. Parker. 2009. Some new Darwin vascular plant specimens from the Beagle voyage. *Botanical Journal of the Linnean Society* 159: 12-18. (RP)

Pugliano, V. 2009. Curiosity and Enlightenment: Collectors and Collections from the Sixteenth to the Nineteenth Century, by Arthur MacGregor. *Museum History Journal* 2(2): 217-219.  
— Book review. (JS)

Radley, J.D. 2009. Fossil invertebrates: new perspectives, meanings and values in smaller museums. *NatSCA News* 17: 39-42. (AP) (JS)

Ryder, S. 2009. The national insect collections: its origins and evolution to global accessibility: evolution. *NatSCA News* 17: 37-38. (AP) (JS)

Sakai, J. 2009. Bringing modern roots to a traditional collection after 10 years in New York City, Ken Cameron was ready for a change. *Plant Science Bulletin* 55(1): 14-15. (RP)

Saoud, N.S. and S. Jury. 2009. Type specimens of G. E. Post in Beirut and The Natural History Museum, London. *Botanical Journal of the Linnean Society* 159: 315-321. (RP)

Scévchuk, P.M. 2009. An easy-to-build museum saddle mount. *Conserve O Gram* 9/2: 1-4. (MR).

Schlatter, E.N. 2008. *Museum Careers: A Practical Guide for Students and Novices*. Left Coast Press, Walnut Creek, CA. Paperback, 184 pp. (JW)  
— Book reviewed by K. Flinder in *Curator* 52(3): 307-309.

Sendino, M.C. 2009. KE EMU and the future of natural history collections. *Collections* 5(2): 149-158. (AP)

Shepherd, J. 2009. Bringing a herbarium to life at Plymouth City Museum and Art Gallery. *NatSCA News* 17: 43-51. (AP) (JS)

Stidham, T.A. and J. Mason. 2009. A Quick Method For Collecting Modern Small-Scale Ichneological and Sedimentological Structures. *Journal of Paleontological Techniques* 4: 1-4. (JW)  
— <http://www.jpaleontologicaltechniques.org/pasta3/JPT%20N4/Bulletin.html>

Straight, W.H., G.L. Davis, H.C.W. Skinner, A.Haims, B.L. McClennan, and D.H. Tanke. 2009. Bone Lesions in Hadrosaurs: Computed Tomographic Imaging as a Guide for Paleohistologic and Stable-Isotopic Analysis. *Journal of Vertebrate Paleontology* 29(2): 315-325. (JW)

Strang, T. and R. Kigawa. 2009. *Combating Pests of Cultural Property*. Canadian Conservation Institute, Ottawa. Paperback, 44 pp. (JW)

Teather, L. 2009. Universities, museums, and civic formation: a case study of the University of Toronto, Museum of Natural Science, 1840-1890. *Museum History Journal* 2(2): 181-210. (JS)

Tello, H. 2006. *Investigations on super fluid extraction (SFE) with carbon dioxide on ethnological materials and objects contaminated with pesticides*. Thesis, Fachhochschule für Technik und Wirtschaft Berlin, Berlin, Germany, 207 pp. (MR)

Thacker, C.E., R.F. Feeney, N.A. Camacho, and J.A. Seigel. 2008. Mold removal and rehousing of the ichthyology and herpetology skeletal collections at the Natural History Museum of Los Angeles County. *Copeia* 2008(4): 737-741.

Üstün, Ö.G. 2008. The limitations of hand-held XRF analyzers as a quantitative tool for measuring heavy metal pesticides on art objects. ICOM-CC Ethnographic Working Group Paper (NB: a shorter version was published in the ICOM-CC *Ethnographic Conservation Newsletter*, Number 30, January 2009, pp. 5-8). 6 pp. (MR)

Voellinger, T.A. and S.S. Wagner. 2009. Cold storage for photograph collections. *Conserve O Gram* 14/10: 1-5. (MR)

Voellinger, T.A. and S.S. Wagner. 2009. Cold storage for photograph collections – using individual freezer units. *Conserve O Gram* 14/11: 1-5. (MR)

Voellinger, T.A. and S.S. Wagner. 2009. Cold storage for photograph collections – vapor-proof packaging. *Conserve O Gram* 14/12: 1-6. (MR)

Wilken, D.H. 2009. Preparing and storing herbarium specimens (revised). *Conserve O Gram* 11/12: 1-4. (MR).

Williams, M. 2009. The Moore Collection: world class paleontology in a small museum. *NatSCA News* 17: 52-54. (AP) (JS)

---



---

## Calendar of Events

*The Calendar of Events is maintained by Christine Chandler of the Documentation Committee. Application deadlines, conferences and symposia relevant to collection management, computerization and conservation of natural history collections are listed. Notices may be submitted to Christine at Putnam Museum of History and Natural Science, 1717 West 12th Street, Davenport, IA 52804; (563) 324-1054 ext. 226; [chandler@putnam.org](mailto:chandler@putnam.org) or [dinoceras@juno.com](mailto:dinoceras@juno.com).*

---

### 2010

#### February 2010

February 1, 2010. **National Leadership Grants** deadline. Details at <http://www.ims.gov>.

February 1-6, 2010. **Exhibit Design and Installation** course (on campus) offered by the Cultural Resource Management Program, University of Victoria, Division of Continuing Studies, <http://www.uvcs.uvic.ca/crmp/contact.aspx>.



February 1-March 12, 2010. **Found in the Collection: Orphans, Old Loans and Abandoned Property**, online course from Northern States Conservation Center. See <http://collectioncare.org/training/trol.html> for more information.

February 1-March 19, 2010. **Museum Artifacts: How they were made and how they deteriorate**, online course from Northern States Conservation Center. See <http://collectioncare.org/training/trol.html> for more information.

February 1-April 30, 2010. **Collections Management Policies for Museums and Related Institutions**, online course from Northern States Conservation Center. See <http://collectioncare.org/training/trol.html> for more information.

February 7-10, 2010. **128th Stated Meeting of the American Ornithologists' Union, a joint meeting with the Cooper Ornithological Society, and the Society of Canadian Ornithologists - Société des Ornithologistes du Canada**, San Diego, California, USA. For more information, go to <http://www.aou.org/meetings/index.php3>.

February 12-14, 2010. **Western Association of Vertebrate Paleontologists (WAVP) 2010 Symposium**, hosted by Arizona Western College and Northern Arizona University-Yuma Campus, Yuma, Arizona, USA. For more information, go to [http://www.azwestern.edu/learning\\_services/instruction/science\\_math\\_and\\_agriculture/2010\\_western\\_association\\_of\\_vertebrate\\_paleontologists\\_wavp.html](http://www.azwestern.edu/learning_services/instruction/science_math_and_agriculture/2010_western_association_of_vertebrate_paleontologists_wavp.html).

February 16, 2010. **Museum Assessment Program (MAP)** deadline. Details at <http://www.imls.gov>.

### March 2010

March 1-26, 2010. **Climate Control for Small Institutions**, online mini course, from the Upstate History Alliance. For more information on these courses, please visit <http://www.upstatehistory.org/services/OnlineLearningCommunities.html>.

March 1-April 9, 2010. **Integrated Pest Management for Museums, Libraries and Archives**, online course from Northern States Conservation Center. See <http://collectioncare.org/training/trol.html> for more information.

March 1-April 23, 2010. **Disaster Plan Research and Writing**, online course from Northern States Conservation Center. See <http://collectioncare.org/training/trol.html> for more information.

March 8-April 2, 2010. **Fundraising for Collections Care**, online course from Northern States Conservation Center. See <http://collectioncare.org/training/trol.html> for more information.

March 11, 2010. **Preservation of Oversize Materials**, Northeast Document Conservation Center 2010 Spring Preservation Workshop Series. Contact Donia Conn, [dconn@nedcc.org](mailto:dconn@nedcc.org), (978) 470-1010 ext. 220, for more information.

March 13-16, 2010. **Care and Identification of Photographs**, Photo Preservation Workshop, Center for Creative Photography at the University of Arizona Libraries, Tucson, AZ, USA. Register at <http://gawainweaver.com/workshop/care-id-photos-2010-tucson>.

March 16, 2010. **Metadata Basics**, Northeast Document Conservation Center 2010 Spring Preservation Workshop Series. Contact Donia Conn, [dconn@nedcc.org](mailto:dconn@nedcc.org), (978) 470-1010 ext. 220, for more information.

March 18, 2010. **Testing Your Disaster Plan**, Northeast Document Conservation Center 2010 Spring Preservation Workshop Series. Contact Donia Conn, [dconn@nedcc.org](mailto:dconn@nedcc.org), (978) 470-1010 ext. 220, for more information.

March 24, 2010. **Preparing for the Unexpected, Disaster Planning for Cultural Collections**, Presented by the Conservation Center for Art

& Historic Artifacts (CCAHA), Hosted and cosponsored by Ash Lawn-Highland, Charlottesville, Virginia, USA. For more information and to register online, go to: <http://www.ccaha.org/education/program-calendar>.

March 29-April 23, 2010. **Collection Management Databases**, online course from Northern States Conservation Center. See <http://collectioncare.org/training/trol.html> for more information.

### April 2010

April 12-May 7, 2010. **Care of Leather and Skin Materials**, online course from Northern States Conservation Center. See <http://collectioncare.org/training/trol.html> for more information.

April 12-May 7, 2010. **Materials for Storage and Display**, online course from Northern States Conservation Center. See <http://collectioncare.org/training/trol.html> for more information.

April 13-17, 2010. **Museums and the Web 2010**, Denver, Colorado, USA. See <http://www.archimuse.com/mw2010/index.html> for more information.

April 21, 2010. **Handling Non-Traditional Objects**, AAM Professional Development Live Webinar. For more information, go to <http://www.aam-us.org/getinvolved/learn/livewebinars.cfm>.

April 26-May 21, 2010. **Preservation Environments**, online course from Northern States Conservation Center. See <http://collectioncare.org/training/trol.html> for more information.

### May 2010

May 3-August 8, 2010. **Collection Management**, Distance education course offered by the Cultural Resource Management Program, University of Victoria, Division of Continuing Studies, <http://www.uvcs.uvic.ca/cultural/courses>.

May 11-14, 2010. **American Institute of Conservation of Historic Artistic Works 38<sup>th</sup> Annual Meeting**, Milwaukee, Wisconsin, USA. For information, visit <http://www.conservation-us.org/index.cfm?fuseaction=Page.viewPage&pageId=710>.

May 16-19, 2010. **Care and Identification of Photographs**, Photo Preservation Workshop, Ames, Iowa, USA. For more information, <http://gawainweaver.com/workshop/care-id-photos-2010-iowa>.

May 22, 2010. **Association of College & University Museums & Galleries (ACUMG) Annual Conference**, Los Angeles, California, USA. For more information, visit <http://www.acumg.org/conference10.html>.

May 22, 2010. **Save America's Treasures** deadline. Details at <http://www.imls.gov>.

May 23-26, 2010. **AAM Annual Meeting and MuseumExpo™**, Los Angeles, California, USA. For more information: <http://www.aam-us.org>.

May 24-29, 2010. **The 11th ICOM WOAM Conference (Wet organic and Archaeological Materials)**, International Committee for Conservation, North Carolina Department of Cultural Resources and East Carolina University, Greenville, North Carolina, USA. More Information: <http://icom-cc.icom.museum>.

May 31-June 5, 2010. **The 25th Annual Meeting of the Society for the Preservation of Natural History Collections (SPNHC) & the Canadian Botanical Association CBA-ABC 2010 Joint Conference**, Ottawa, Ontario, Canada. Register at <http://www.spnhc-cba2010.org/registration.html>.

### June 2010

Continued from page 25:  
.....Calendar of Events

June 2-4, 2010. **Design and Construction of Mounts for Exhibits** course offered by the Campbell Center for Historic Preservation Studies, Mount Carroll, Illinois, USA; (815) 244-1173; Fax (815) 244-1619; registrations@campbellcenter.org; <http://www.campbellcenter.org>.

June 3-5, 2010. **Making Storage Boxes, Mounts and Enclosures** course offered by the Campbell Center for Historic Preservation Studies, Mount Carroll, Illinois, USA; (815) 244-1173; Fax (815) 244-1619; registrations@campbellcenter.org; <http://www.campbellcenter.org>.

June 11-15, 2010. **The 2010 Meeting of the American Society of Mammalogists**, University of Wyoming, Laramie, Wyoming, USA. Go to <http://www.mammalsociety.org> for more information.

June 14-17, 2010. **The Museum Environment** (formerly Environmental Monitoring and Control) course offered by the Campbell Center for Historic Preservation Studies, Mount Carroll, Illinois, USA; (815) 244-1173; Fax (815) 244-1619; registrations@campbellcenter.org; <http://www.campbellcenter.org>.

June 21-23, 2010. **Computer Software for Collections Management** course offered by the Campbell Center for Historic Preservation Studies, Mount Carroll, Illinois, USA; (815) 244-1173; Fax (815) 244-1619; registrations@campbellcenter.org; <http://www.campbellcenter.org>.

June 25-29, 2010. **Evolution 2010**, the annual meetings of the **Society of Systematic Biologists (SSB)**, the **American Society of Naturalists (ASN)**, and the **Society for the Study of Evolution (SSE)** will be held in Portland, Oregon, USA. Details at <http://systbiol.org>.

June 28-July 1, 2010. **Joint Meeting of the Mycological Society of America (MSA) and the International Symposium on Fungal Endophytes of Grasses (ISFEG)**, Lexington, Kentucky, USA. For more information: <http://www.ca.uky.edu/msaisfeg>.

June 28-July 3, 2010. **Third International Palaeontological Congress (IPC3)**, hosted by the Palaeontological Society, London, UK. Meeting website at <http://www.ipc3.org>.

#### July 2010

July 3-7, 2010. **24<sup>th</sup> Annual Meeting of the Society for Conservation Biology (SCB)** will be held at the University of Alberta, Edmonton, Alberta, Canada. More details are available at <http://www.conbio.org>.

July 5-30, 2010. **Museum Microclimates**, online course from Northern States Conservation Center. See <http://collectioncare.org/training/trol.html> for more information.

July 7, 2010. **Museum Standards and Best Practices Primer**, 90-minute AAM Professional Development Webinar. For more information, go to <http://www.aam-us.org/getinvolved/learn/livewebinars.cfm>.

July 7-12, 2010. **JIMI 2010, Joint Meeting of Ichthyologists and Herpetologists, organized by the American Society of Ichthyologists and Herpetologists, the American Elasmobranch Society, the Society for the Study of Amphibians and Reptiles and Herpetologists League**, Providence, Rhode Island, USA. For more information go to <http://www.dce.k-state.edu/conf/jointmeeting>.

July 19-21, 2010. **Collections Policies for Small Museums** course offered by the Campbell Center for Historic Preservation Studies, Mount Carroll, Illinois, USA; (815) 244-1173; Fax (815) 244-1619; registrations@campbellcenter.org; <http://www.campbellcenter.org>.

July 22-24, 2010. **Digitizing Museum, Collections I: Cameras and Scanners** course offered by the Campbell Center for Historic Preservation Studies, Mount Carroll, Illinois, USA; (815) 244-1173; Fax (815) 244-1619; registrations@campbellcenter.org; <http://www.campbellcenter.org>.

July 22-25, 2010. **Care and Identification of Photographs**, Photo Preservation Workshop, Seattle, Washington, USA. For more information, <http://gawainweaver.com/workshop/care-id-photos-2010-seattle>.

July 31-August 4, 2010. **Botany 2010**, Botanical Society of America, Providence, Rhode Island, USA. For more information, visit <http://2010.botanyconference.org>.

#### August 2010

August 1-6, 2010. **95<sup>th</sup> Annual Meeting of the Ecological Society of America**, Pittsburgh, Pennsylvania, USA. Go to <http://www.esa.org> for more information.

August 2-27, 2010. **Applying Numbers to Collection Objects: Materials and Methods of Object Numbering**, online course from Northern States Conservation Center. See <http://collectioncare.org/training/trol.html> for more information.

August 10-14, 2010. **Principles of Collections Management** (formerly Collections Management in Storage) course offered by the Campbell Center for Historic Preservation Studies, Mount Carroll, Illinois, USA; (815) 244-1173; Fax (815) 244-1619; registrations@campbellcenter.org; <http://www.campbellcenter.org>.

August 16-18, 2010. **Collections Storage Planning and Design** course offered by the Campbell Center for Historic Preservation Studies, Mount Carroll, Illinois, USA; (815) 244-1173; Fax (815) 244-1619; registrations@campbellcenter.org; <http://www.campbellcenter.org>.

August 17-20, 2010. **Preservation of Archives** course offered by the Campbell Center for Historic Preservation Studies, Mount Carroll, Illinois, USA; (815) 244-1173; Fax (815) 244-1619; registrations@campbellcenter.org; <http://www.campbellcenter.org>.

August 22-28, 2010. **25<sup>th</sup> International Ornithological Congress**, Campos do Jordão, Brazil. Go to <http://www.ib.usp.br/25ioc> for more details.

#### Fall 2010

October 1, 2010. **Conservation Project Support Grants** deadline. Details at <http://www.ims.gov>.

October 2-5, 2010. **Association of Science-Technology Centers (ASTC) 2010 Annual Conference**, Honolulu, Hawaii, USA. Conference information at <http://www.astc.org/conference/future.htm>.

October 10-13, 2010. **Society of Vertebrate Paleontology 70<sup>th</sup> Annual Meeting**, Pittsburgh, Pennsylvania, USA. See <http://www.vertpaleo.org/meetings/index.cfm> for more information.

October 31-November 3, 2010. **Reaching New Peaks in Geoscience, 2010 Annual Meeting Geological Society of America (GSA)**, Denver, Colorado, USA. For more information, visit <http://www.geosociety.org/meetings>.

November 2, 2010. **Museums for America Grants** deadline. Details at <http://www.ims.gov>.

November 30, 2010. **Museum Assessment Program Grants** deadline. Details at <http://www.ims.gov>.

December 12-15, 2010. **Entomological Society of America Annual Meeting**, San Diego, California, USA. See <http://www.entsoc.org/am/index.htm> for more information.

December 15, 2010. **Connecting to Collections: Statewide Planning Grants** deadline. Details at <http://www.ims.gov>.

# Officers - Council Members - Committee Chairs - Representatives

## EXECUTIVE COUNCIL

*President:* Richard Rabeler (rabeler@umich.edu)  
*President-Elect:* Jean-Marc Gagnon (jmgagnon@mus-nature.ca)  
*Past President:* Tim White (tim.white@yale.edu)  
*Treasurer:* Barbara Brown (bbrown@amnh.org)  
*Secretary:* Judith Price (jprice@mus-nature.ca)  
*Managing Editor:* Susan Butts (susan.butts@yale.edu)

## MEMBERS-AT-LARGE

*2007-2010:* Clare Valentine (c.valentine@nhm.ac.uk)  
*2007-2010:* James Macklin (jmacklin@oeb.harvard.edu)  
*2008-2011:* Andy Bentley (abentley@ku.edu)  
*2008-2011:* Ann Molineux (annm@mail.utexas.edu)  
*2009-2012:* Paul Davis (p.davis@nhm.ac.uk)  
*2009-2012:* Debra Trock (dtrock@calacademy.org)

## STANDING COMMITTEES

### Archives:

Linda Hollenberg (hollenl@si.edu)

### Bylaws:

Tim White (tim.white@yale.edu)

### Conference:

Jean-Marc Gagnon (jmgagnon@mus-nature.ca)  
*Ottawa 2010:* Jean-Marc Gagnon (jmgagnon@mus-nature.ca)  
*San Francisco 2011:* Debra Trock (dtrock@calacademy.org)

### Conservation:

#### Chair Vacant

#### Adhesives Historical Research:

Jude Southward (jude.southward@dmns.org)

#### CBOL: Fluid Preservation Research:

Andy Bentley (abentley@ku.edu)

#### Resources (RDU):

Cindy Ramotnik (ramotnik@unm.edu) (US)  
 Kelly Sendall (ksendall@royalbcmuseum.bc.ca) (CA)

### Documentation:

Marcia Revelez (mrevelez@ou.edu)  
 Elizabeth Leith (etereba@ou.edu)

### Citations:

Larissa Busch (lrbusch@ou.edu)

### NHCOLL-L List Manager:

Gregory Watkins-Colwell  
 (gregory.watkins-colwell@yale.edu)

### Education and Training:

Carol Butler (butlercr@si.edu)  
 Jeff Stephenson (Jeff.Stephenson@dmns.org)

### Elections:

Kelly Sendall (ksendall@royalbcmuseum.bc.ca)

### Executive:

Richard Rabeler (rabeler@umich.edu)

### Finance:

Robert Waller (rwaller@mus-nature.ca)  
 Lisa Palmer (palmerl@si.edu)

### Legislation and Regulations:

Sally Shelton (Sally.Shelton@sdsmt.edu)

### Membership:

Lisa Palmer (palmerl@si.edu)

### Publications:

Susan Butts (susan.butts@yale.edu)

### Newsletter Editors:

Andy Bentley (abentley@ku.edu)

Lori Schlenker (lschlenk@ku.edu)

### Technical Leaflet Editor:

Leslie Skibinski (lskibinski@delmnh.org)

### Recognition and Grants:

Tim White (tim.white@yale.edu)

### Web:

James Macklin (jmacklin@oeb.harvard.edu)

Ann Molineux (annm@austin.utexas.edu) (editor)

## SESSIONAL COMMITTEES

*Best Practices:* James Macklin (jmacklin@oeb.harvard.edu)

*Ethics:* Linda Ford (lford@oeb.harvard.edu)

*Federal Collections:* Chris Norris (christopher.norris@yale.edu)

*Long-Range Planning:* Jean-Marc Gagnon (jmgagnon@mus-nature.ca)

*Mentorship:* Chris Norris (christopher.norris@yale.edu)

*Treasury Operations:* Tim White (tim.white@yale.edu)

*25th Anniversary Events:* Janet Waddington (janetw@sbcglobal.net)

## SOCIETY REPRESENTATIVES/LIAISONS

**AIC:** Jude Southward (jude.southward@dmns.org)

**ASIH:** Gregory Watkins-Colwell (gregory.watkins-colwell@yale.edu)

**ASM:** Suzanne B. McLaren (mclarens@carnegieMNH.edu)

**ASPT:** Richard Rabeler (rabeler@umich.edu)

**GBIF:** James Macklin (jmacklin@oeb.harvard.edu)

**GSA/Paleo Soc:** Ann Molineux (annm@austin.utexas.edu)

### Heritage Health Index & Preservation Working Group:

Cathy Hawks (cahawks@aol.com)

**ISBER:** Carol Butler (butlercr@si.edu)

**NatSCA:** Clare Valentine (c.valentine@nhm.ac.uk)

**NSCA:** vacant

**Paleontological Society:** Jessica Cundiff (jcundiff@oeb.harvard.edu)

**Registrars Committee, AAM:** Vacant

**Society of Herbarium Curators:** Sula Vanderplank  
 (sula.vanderplank@cgu.edu)

**TDWG:** James Macklin (jmacklin@oeb.harvard.edu)

### US Heritage Emergency National Task Force:

Cathy Hawks (cahawks@aol.com)



SPNHC Newsletter  
 Andy Bentley  
 Division of Ichthyology  
 Biodiversity Institute, University of Kansas  
 Dyche Hall  
 1345 Jayhawk Boulevard  
 Lawrence, KS 66045-7593

**Visit SPNHC at [www.spnhc.org](http://www.spnhc.org)!**

## NSC Alliance Washington Report

NSC Alliance Washington Report, Volume 1, Issue 2, February 12, 2010

- A Budget Bump for the Smithsonian: Collections, Biodiversity are Beneficiaries
- NSF BIO, Collections and the FY 2011 Budget
- USGS Gets Funding Bump in FY 2011; Biological Research to Be Cut
- NSF Director to Retire
- 2010 Science and Engineering Indicators Released
- House Science Committee to Reauthorize COMPETES Act
- New Online Group Facilitates Networking Among Collections Professionals
- Register Now for "Biodiversity 2010 and Beyond: Science and Collections" Yes!!! That's us.
- Nominations Requested for the 5th IPCC Assessment Report
- USGS Launches New Marine Life Database

**Policy News from NSC Alliance** Through the NSC Alliance partnership with the American Institute of Biological Sciences, we are pleased to provide NSC Alliance members with the following public policy update. If you have any questions or require additional information regarding any of the following items, please contact NSC Alliance director of public policy Dr. Robert Gropp at 202-628-1500 x 250 or at [rgropp@aibs.org](mailto:rgropp@aibs.org).

**A Budget Bump for the Smithsonian: Collections, Biodiversity are Beneficiaries** For fiscal year (FY) 2011, the President has requested a \$36 million budget increase for the Smithsonian Institution (SI). If provided by Congress, SI would operate with \$797.6 million in federal funds. Within this amount, roughly \$661 million (an increase of \$27 million) would be allocated to Salaries and Expenses with the balance of \$136.8 million allocated to the Facilities Capital budget.

**NSF BIO, Collections and the FY 2011 Budget** For fiscal year (FY) 2011, the President has requested \$7.4 billion for the National Science Foundation (NSF), an increase of roughly 8 percent from FY 2010. "The essence of NSF's 2011 Budget Request is the reaffirmation of the agency's roots as the nation's wellspring of scientific innovation," said NSF director Dr. Arden Bement, Jr. during the release of the agency's FY 2011 budget. Within the \$797.81 million request for BIO, funding would be allocated among the five divisions accordingly: Molecular and Cellular Biosciences: \$133.69 million, an \$8.1 million (6.4 percent) increase; Integrative Organismal Systems: \$226.7 million, a \$10.45 million (4.8 percent) increase; Environmental Biology: \$155.59 million, a \$13.04 million (9.1 percent) increase; Biological Infrastructure: \$145.63 million, an \$18.77 million (14.8 percent) increase; Emerging Frontiers: \$106.2 million, a \$2.91 million (2.8 percent) increase.

**USGS Gets Funding Bump in FY 2011; Biological Research to Be Cut** The Department of the Interior (DOI) is slated for a 0.4 percent budget cut in FY 2011. Consequently, most bureaus within the department would see stagnant or declining funding. The USGS, however, is one of three Interior bureaus that would receive a budget increase (1.9 percent increase), for a total of \$1.133 billion in FY 2011.

**New Online Group Facilitates Networking Among Collections Professionals** A new online group has formed to encourage networking among natural science collections leaders. This group offers an opportunity for leaders from collections across the nation to identify and discuss common public policy issues, and other common challenges facing natural science collections professionals. To join this group you must first join LinkedIn. There is no cost for creating a profile on this site. Once you have registered, simply search the Groups function for "Natural Science Collections Leadership." Membership in this group is limited to natural science collections professionals, but there is no cost to join or participate in this group.

**New Marine Life Database** The U.S. Geological Survey has launched a new online tool to enhance access to information about life in the oceans. The Ocean Biodiversity Information System (<http://www.iohis.org>) is a one-stop source for biogeographic data collected from U.S. waters. Users can search and download millions of individual records, which include descriptions of where and when the data was collected.

More details on these and other items at <http://www.nscalliance.org>.