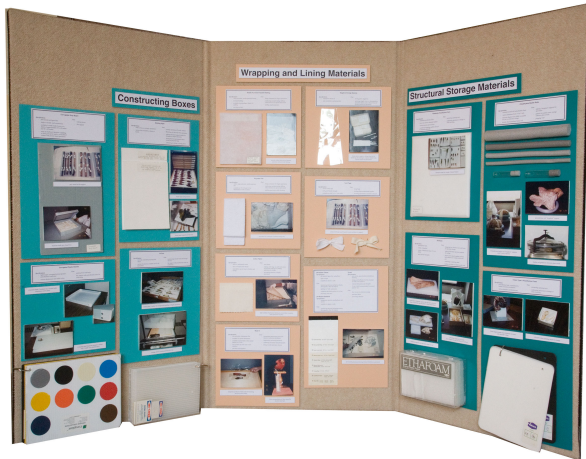
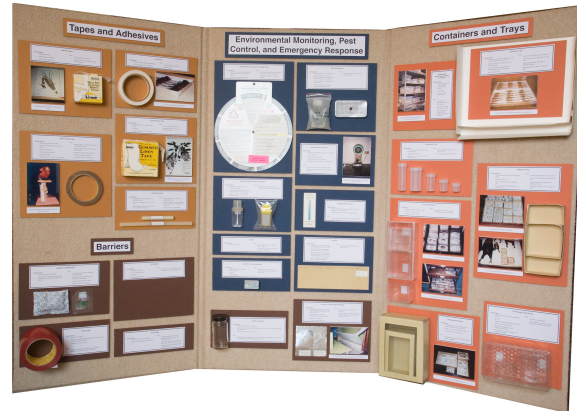


Conservation Committee  
**SPNHC Resources Display**

**U.S. Resources Display**



**FRONT**



**BACK**

**Shipping Specifications**

The display is packed in a black plastic case on wheels (50L x 25W x 9H inches; 1.3 m x 635 mm x 230 mm) weighing approximately 60 pounds (30 kg). Despite its weight the case can be moved about easily. Shipping arrangements are made by the borrower and the shipper of his/her choice. Shipping costs and times will vary depending on the destination and amount of time in transit. Check with your local shipper for specific costs and shipping. Because the girth of the black case exceeds United States Postal Service (USPS) requirements it cannot be shipped via USPS.

**Packing/Unpacking Instructions**

Instructions and photos are included with the display to assist the borrower with unpacking the display, and repacking it for shipping.

**Setting up the Display**

The display consists of a folding 3-part vertical panel with museum supplies and labels attached by velcro to both sides of the panel (resulting in 6 viewing areas). Each panel or viewing area is approximately 44 high x 23 inches (1.1 m x 585 mm) wide. A minimal display area of 8 ft x 4 ft (2.4 x 1.2 m) is required. To allow the viewer clear access to the 6 viewing panels the display should not be placed against a wall. Photos and simple instructions are included with the display to show you how easily it is done.

- [Comprehensive list of supplies information and complete list of vendors \(revised May 2006\) \(.pdf\)](#)

