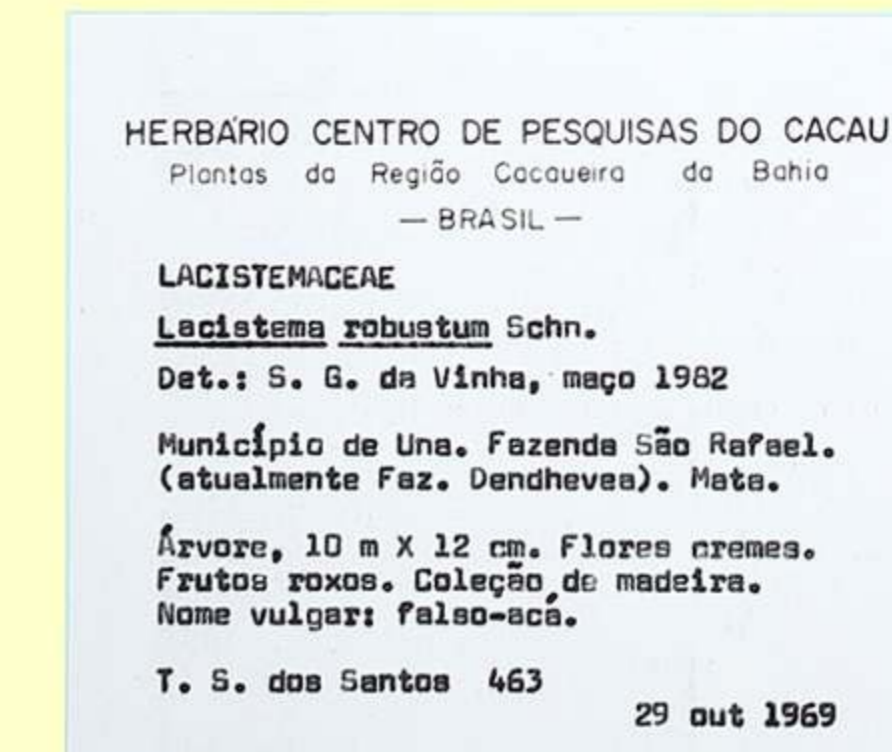


What's hidden in your herbarium?

- The undiscovered names of Lacistemataceae -

www.lacistemataceae.org/whatsnew.html
Fi Young



Introduction

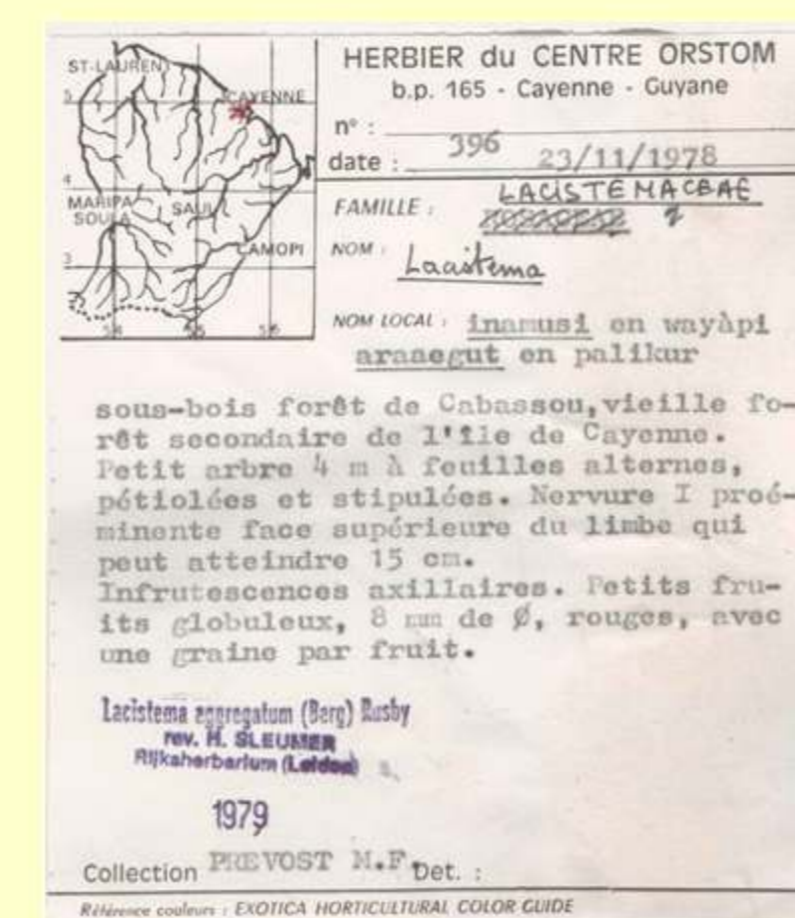
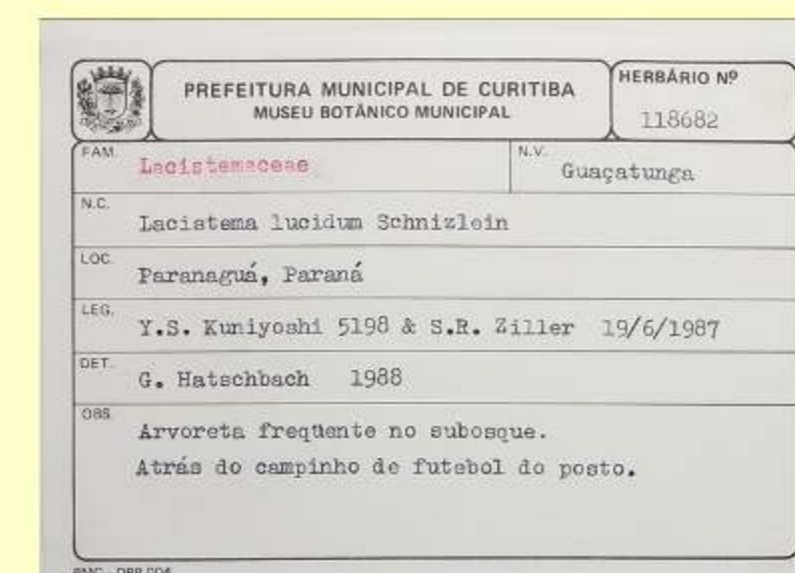
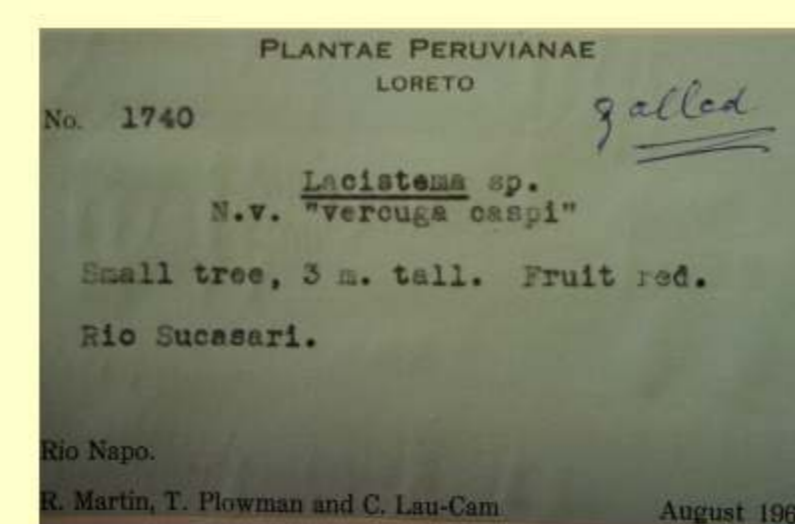
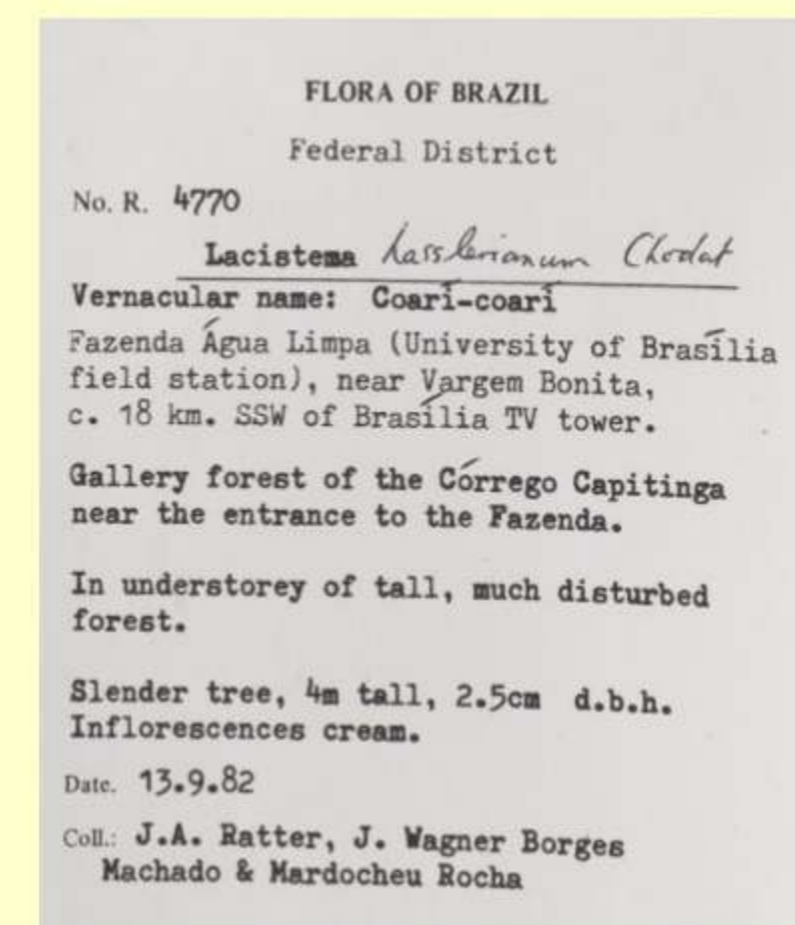
The Lacistemataceae online monograph¹ has been on the internet for over a decade now and the first complete version (No. 3) of the Sleumer online monograph² included :

- 2 family/tribe names
- 65 species names
- 25 common names
- 51 herbaria visited
- 3,133 specimens examined

Now undergoing a complete redesign I am adding reams of information from virtual herbaria and libraries that was not available back in 2007 including links that display type specimen images on my website.

The Index Herbariorum³ database holds details of 4,000+ herbaria and I have calculated that ~450 of them are located within the distribution range of the Lacistemataceae family.

When examining specimen images held in virtual herbaria for my monograph update would I discover other names unknown to Sleumer?

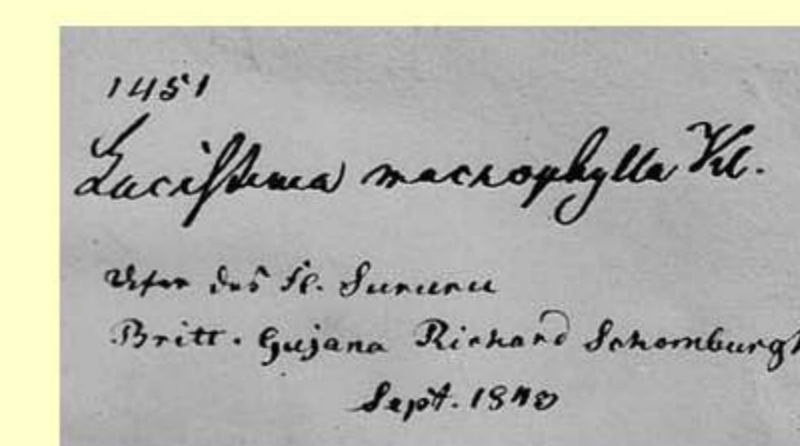
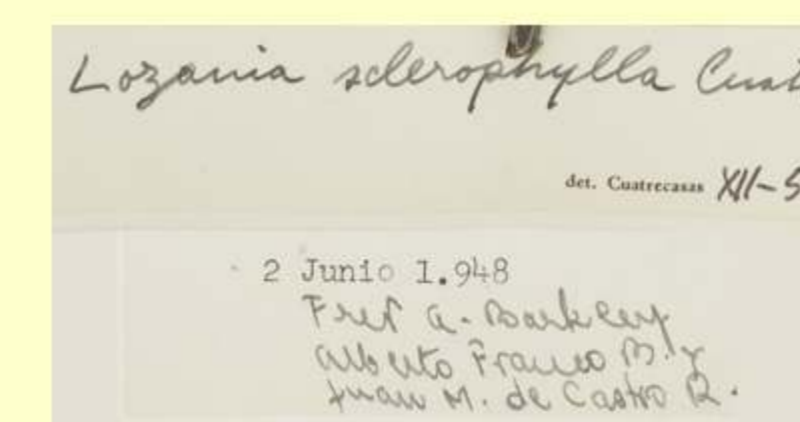
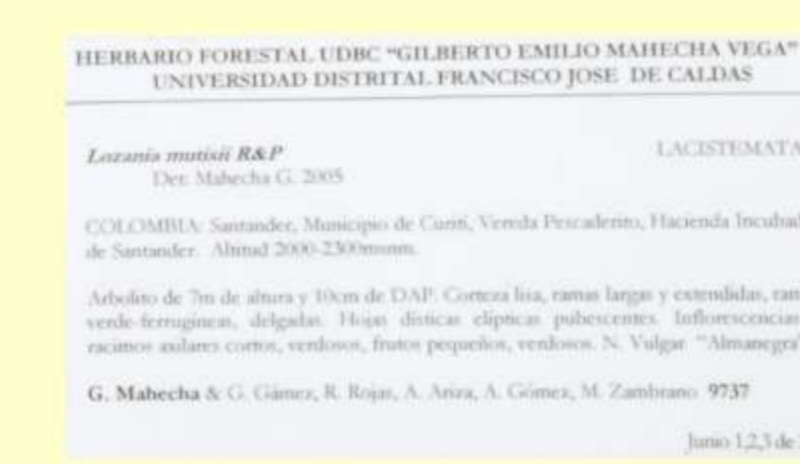
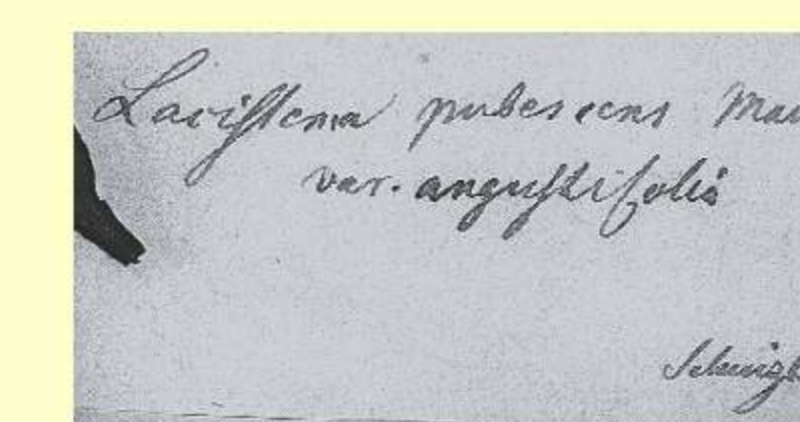
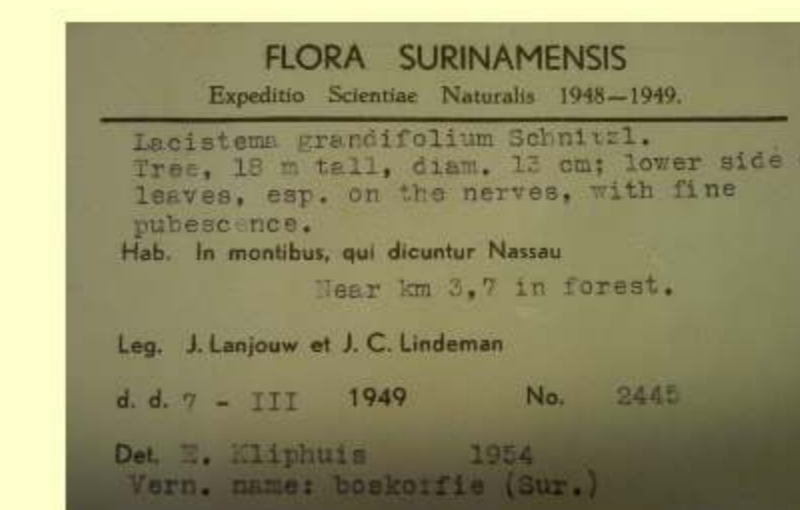
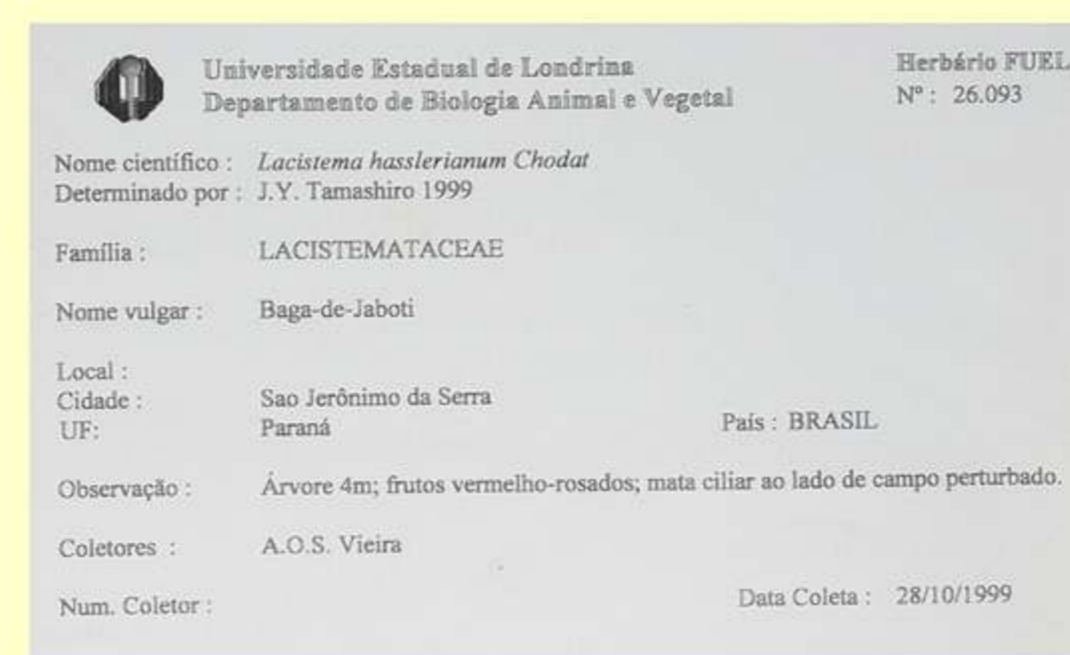


Methodology

Calculate the number of herbaria and the number of specimens by examining the 1980 monograph

Locate virtual herbaria and download all the specimen images examine them for species and common names

Record the data to generate bar charts



References

1. Lacistemataceae Holistic Database online at www.lacistemataceae.org/whatsnew.html
2. Sleumer H O (1980) Flora Neotropica Monograph No. 22 - Flacourtiaceae, Organization for Flora Neotropica, The New York Botanical Garden, New York : 182-206
3. Index Herbariorum online at <http://sweetgum.nybg.org/science/ih/>

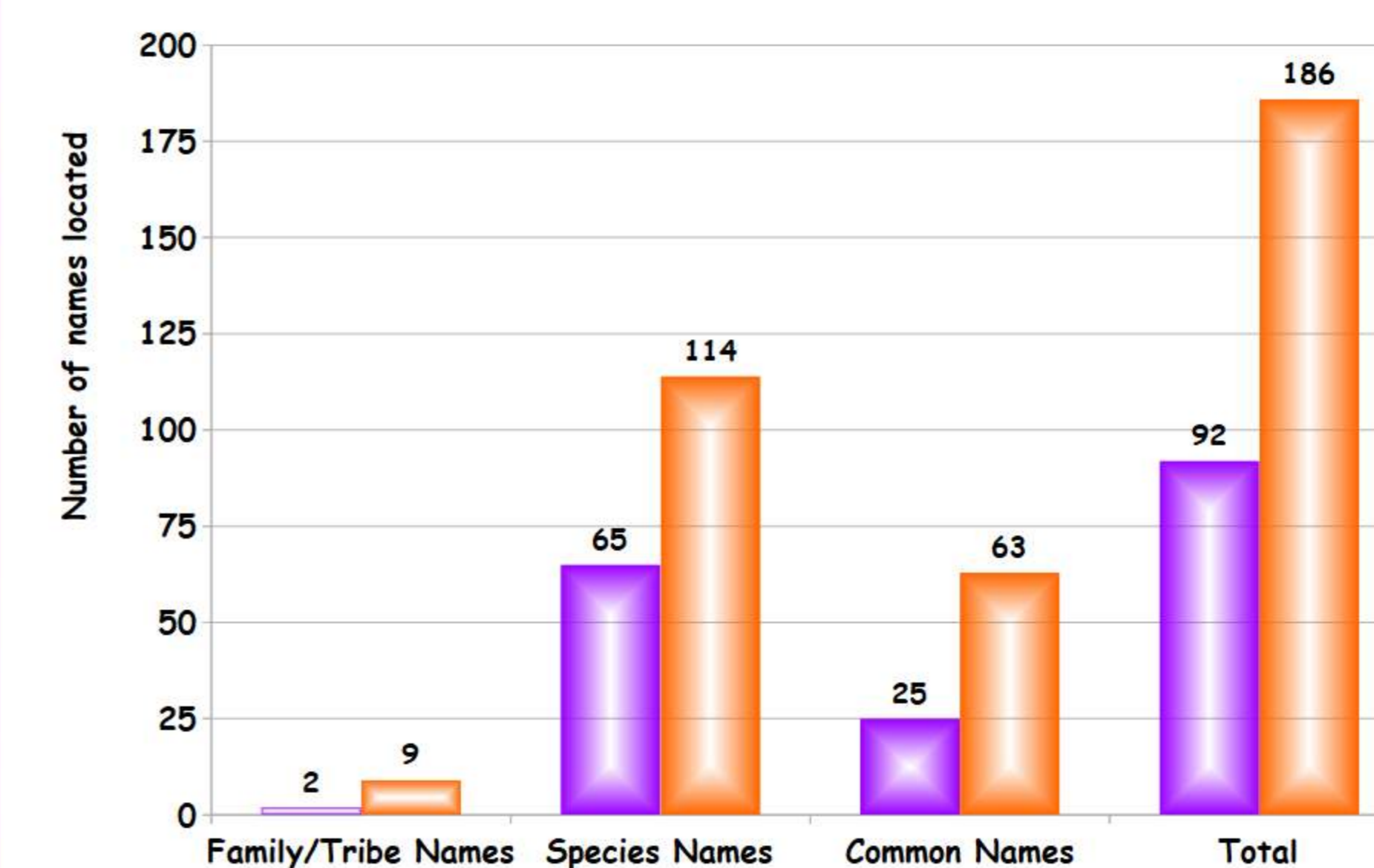
Results

(as of 2020 Apr 02)

My online monograph has :

- 9 family/tribe names
- 114 species names
- 63 common names
- 85 virtual herbaria visited
- 5,359 specimens examined

Lacistemataceae Monograph : Number of names discovered (comparison between years 2009 and 2020)



Lacistemataceae Monograph : Number of herbaria and specimens visited (comparison between years 2009 and 2020)

